

Datasheet for ABIN6719948
Soluble E-Selectin ELISA Kit



[Go to Product page](#)

1 Image

Overview

Quantity:	1 kit
Target:	Soluble E-Selectin (sE-Selectin)
Reactivity:	Mouse
Method Type:	Sandwich ELISA
Detection Range:	62.5 pg/mL - 4000 pg/mL
Minimum Detection Limit:	62.5 pg/mL
Application:	ELISA

Product Details

Purpose:	Mouse sE-Selectin Sandwich ELISA Kit for Quantitative Detection
Brand:	AccuSignal™
Sample Type:	Cell Culture Supernatant, Plasma (heparin - citrate), Serum
Analytical Method:	Quantitative
Detection Method:	Colorimetric
Specificity:	Production: Natural and recombinant mouse sE-Selectin. There is no detectable cross-reactivity with other relevant proteins.
Sensitivity:	< 10 pg/mL
Components:	<ul style="list-style-type: none">• Antibody-coated 96-well plate• Target Protein Standard• Detection antibody

Product Details

- Detection reagent
- Diluent buffers
- Wash buffers
- Substrate Solution
- Stop solutions
- Adhesive covers

Target Details

Target:	Soluble E-Selectin (sE-Selectin)
Alternative Name:	sE-Selectin (sE-Selectin Products)
Background:	<p>Synonyms: CD62 antigen-like family member E, CD62E, CD62E antigen, E selectin, E-selectin, ELAM, ELAM-1, ELAM1, Endothelial leukocyte adhesion molecule 1, ESEL, LECAM2, Leukocyte endothelial cell adhesion molecule 2, Leukocyte-endothelial cell adhesion molecule 2, LYAM2_HUMAN, sele</p> <p>Background: E-selectin, also called endothelial-leukocyte adhesion molecule-1(ELAM-1), is a cell surface glycoprotein expressed by cytokine-activated endothelium that mediates the adhesion of blood neutrophils. An increased expression of E-selectin has been observed in the arterial endothelium interacting with lymphocytes and macrophages in human atherosclerotic lesions. E-selectin plays a critical role in mediating tissue-specific homing of T cells into skin, and of primitive hematopoietic progenitor cells(HPCs) into bone marrow(BM). A structurally and functionally related group of genes, lymph node homing receptor(LHR), granule membrane protein 140(GMP-140), and endothelial leukocyte adhesion molecule 1(ELAM-1) are shown to constitute a gene cluster on mouse and human chromosome 1. The standard product used in this kit is recombinant mouse E-Selectin, excluding intercellular E-Selectin and transmembrane domain. It consists of totally 557 amino acids with the molecular mass of 85.8KDa.</p>
Gene ID:	20339
NCBI Accession:	NP_035475
UniProt:	Q00690

Application Details

Application Notes:	Useful in Sandwich ELISA for Quantitative Detection of Antigen. Aliquot 0.1 mL per well of the 4000pg/mL, 2000pg/mL, 1000pg/mL, 500pg/mL, 250pg/mL, 125pg/mL, 62.5pg/mL mouse E-Selectin standard solutions into the precoated 96-well plate. Add 0.1 mL of the sample diluent buffer into the control well (Zero well). Add 0.1 mL of each properly diluted sample of mouse
--------------------	--

Application Details

cell culture supernates, serum or plasma(heparin, citrate) to each empty well. It is recommended that each mouse E-Selectin standard solution and each sample be measured in duplicate.

Comment: Standard: Expression system for standard: NSO, Immunogen sequence: W22-P557

Sample Volume: 100 µL

Plate: Pre-coated

Restrictions: For Research Use only

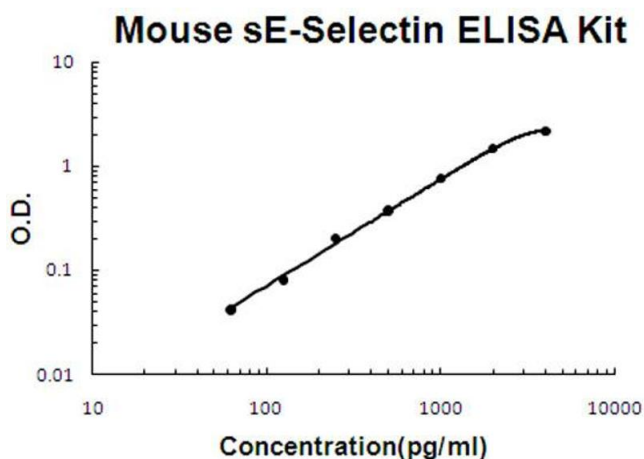
Handling

Storage: 4 °C, -20 °C

Storage Comment: Store vials at 4°C prior to opening. Centrifuge product if not completely clear after standing at room temperature. This product is stable for 6 months at 4°C as an undiluted liquid. Dilute only prior to immediate use. For extended storage freeze at -20°C or below for 12 months. Avoid cycles of freezing and thawing.

Expiry Date: 12 months

Images



ELISA

Image 1. Mouse sE-Selectin Accusignal ELISA Kit Mouse sE-Selectin AccuSignal ELISA Kit standard curve. Assay Range: 62.5pg/ml-4000pg/ml. Sensitivity: <10pg/ml.