

Datasheet for ABIN6719949

Prolactin ELISA Kit**1** Image[Go to Product page](#)

Overview

Quantity:	1 kit
Target:	Prolactin (PRL)
Reactivity:	Human
Method Type:	Sandwich ELISA
Detection Range:	156 pg/mL - 10000 pg/mL
Minimum Detection Limit:	156 pg/mL
Application:	ELISA

Product Details

Purpose:	Human Prolactin Sandwich ELISA Kit for Quantitative Detection
Brand:	AccuSignal™
Sample Type:	Cell Culture Supernatant, Plasma (heparin - citrate), Serum
Analytical Method:	Quantitative
Detection Method:	Colorimetric
Specificity:	Production: Natural and recombinant human Prolactin. There is no detectable cross-reactivity with other relevant proteins.
Sensitivity:	< 10 pg/mL
Components:	<ul style="list-style-type: none">• Antibody-coated 96-well plate• Target Protein Standard• Detection antibody

Product Details

- Detection reagent
- Diluent buffers
- Wash buffers
- Substrate Solution
- Stop solutions
- Adhesive covers

Target Details

Target: Prolactin (PRL)

Alternative Name: Prolactin ([PRL Products](#))

Background: Synonyms: AV290867, Lactogenic Hormone, Luteotropic Hormone, Mamotropin, OTTMUSP00000000651, PRL, Prl1a1, Prol, Prolactin precursor, RATPRLSD1, RNPROL, RP23-35116.2, RP3-404K8.1

Background: Prolactin, also called PRL, is a protein that in humans is encoded by the PRL gene. This gene is mapped to 6p22.3. This gene encodes the anterior pituitary hormone prolactin. It may play a role in cell survival by suppressing apoptosis, and it is essential for lactation. Prolactin also acts in a cytokine-like manner and as an important regulator of the immune system. Prolactin has important cell cycle related functions as a growth-, differentiating- and anti-apoptotic factor. As a growth factor binding to cytokine like receptors it has also profound influence on hematopoiesis, angiogenesis and is involved in the regulation of blood clotting through several pathways.

Gene ID: 5617

NCBI Accession: [NP_000939](#)

UniProt: [P01236](#)

Pathways: [JAK-STAT Signaling](#), [Peptide Hormone Metabolism](#), [Response to Growth Hormone Stimulus](#), [Protein targeting to Nucleus](#)

Application Details

Application Notes: Useful in Sandwich ELISA for Quantitative Detection of Antigen. Aliquot 0.1 mL per well of the 10000pg/mL, 5000pg/mL, 2500pg/mL, 1250pg/mL, 625pg/mL, 312pg/mL, 156pg/mL human Prolactin standard solutions into the precoated 96-well plate. Add 0.1 mL of the sample diluent buffer into the control well (Zero well). Add 0.1 mL of each properly diluted sample of human cell culture supernates, serum or plasma (heparin, citrate) to each empty well. It is

Application Details

recommended that each human Prolactin standard solution and each sample be measured in duplicate.

Comment: Standard: Expression system for standard: E.coli, Immunogen sequence: L29-C227

Sample Volume: 100 μ L

Plate: Pre-coated

Restrictions: For Research Use only

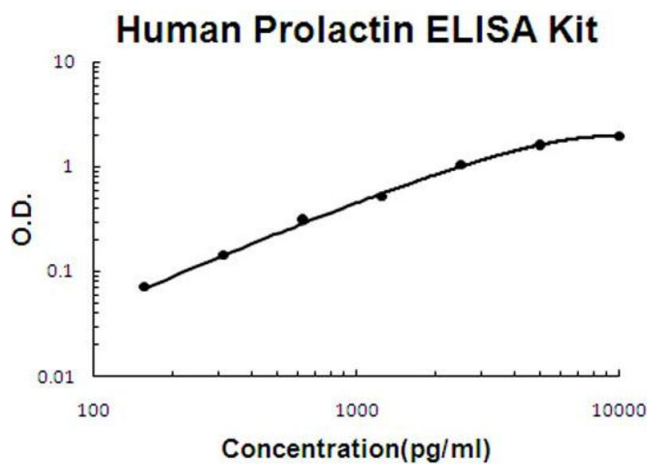
Handling

Storage: 4 °C, -20 °C

Storage Comment: Store vials at 4°C prior to opening. Centrifuge product if not completely clear after standing at room temperature. This product is stable for 6 months at 4°C as an undiluted liquid. Dilute only prior to immediate use. For extended storage freeze at -20°C or below for 12 months. Avoid cycles of freezing and thawing.

Expiry Date: 12 months

Images



ELISA

Image 1. Human Prolactin Accusignal ELISA Kit Human Prolactin AccuSignal ELISA Kit standard curve. Assay Range: 156pg/ml-10000pg/ml. Sensitivity: <10pg/ml.