

Datasheet for ABIN6719957

CXCL2 ELISA Kit**1** Image[Go to Product page](#)

Overview

Quantity:	1 kit
Target:	CXCL2
Reactivity:	Mouse
Method Type:	Sandwich ELISA
Detection Range:	15.6 pg/mL - 1000 pg/mL
Minimum Detection Limit:	15.6 pg/mL
Application:	ELISA

Product Details

Purpose:	Sandwich ELISA for Quantitative Detection of Antigen
Sample Type:	Cell Culture Supernatant, Plasma (EDTA - heparin), Serum
Analytical Method:	Quantitative
Detection Method:	Colorimetric
Characteristics:	<p>Synonyms: C-X-C motif chemokine 2, Chemokine (C-X-C motif) ligand 2, CINC-2a, Cxcl2, CXCL2_HUMAN, Gro beta, Gro-beta, GRO-beta(5-73), GRO-beta-T, GRO2, GRO2 oncogene, GROb, Growth-regulated protein beta, Hematopoietic synergistic factor, HSF, Macrophage inflammatory protein 2-alpha, Melanoma growth stimulatory activity beta, MGSA beta, MGSA-b, MIP 2, MIP 2a, MIP2, MIP2-alpha, MIP2A, ,SB-251353, SCYB2</p> <p>Background: MIP is a member of the aquaporin family of membrane-bound water channels. MIP family proteins are thought to contain 6 TM domains. Sequence analysis suggests that the proteins may have arisen through tandem, intragenic duplication from an ancestral protein that</p>

Product Details

contained 3 TM domains. Major intrinsic protein(MIP, also called MP26) is the predominant fiber cell membrane protein of the ocular lens. The major intrinsic protein(MIP) of the vertebrate eye lens is the first identified member of a sequence-related family of cell-membrane proteins that appears to have evolved by gene duplication. Several members of the MIP family transport water(aquaporins), glycerol and other small molecules in microbial, plant and animal cells. The standard used in this kit is recombinant mouse MIP-2(A28-N100), consisting of 73 amino acids with the molecular mass of 8KDa.

Gene Name: CXCL2

Production: Natural and recombinant mouse MIP-2. There is no detectable cross-reactivity with other relevant proteins.

Standard: Expression system for standard: E.coli, Immunogen sequence: A28-N100

Target Details

Target:	CXCL2
Alternative Name:	MIP-2 (CXCL2 Products)
Gene ID:	20310
NCBI Accession:	NP_033166
UniProt:	P10889
Pathways:	Cellular Response to Molecule of Bacterial Origin

Application Details

Application Notes:	<p>Application Note: Useful in Sandwich ELISA for Quantitative Detection of Antigen. Aliquot 0.1 mL per well of the 1000pg/mL, 500pg/mL, 250pg/mL, 125pg/mL, 62.5pg/mL, 31.2pg/mL, 15.6pg/mL mouse MIP-2 standard solutions into the precoated 96-well plate. Add 0.1 mL of the sample diluent buffer into the control well (Zero well). Add 0.1 mL of each properly diluted sample of mouse cell culture supernates, serum or plasma(heparin, EDTA) to each empty well. It is recommended that each mouse MIP-2 standard solution and each sample be measured in duplicate.</p> <p>Blood Product Anticoagulant: Heparin Sodium</p> <p>ELISA Dilution: 15.6pg/mL-1000pg/mL</p> <p>Other Performance Data: DOE: 2-8° C - 10/02/18 -20° C - 04/02/19</p>
Sample Volume:	100 µL

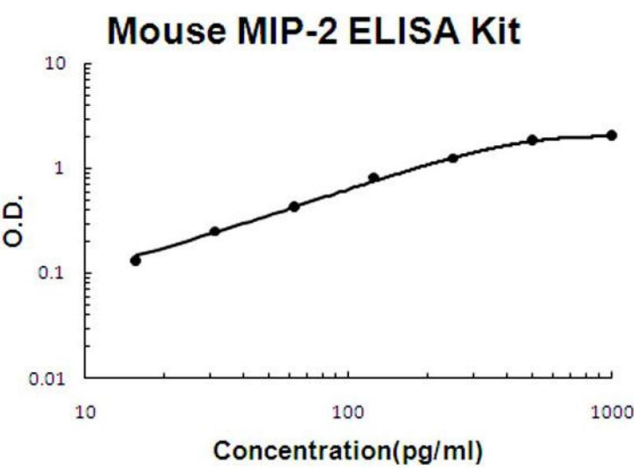
Application Details

Plate:	Pre-coated
Restrictions:	For Research Use only

Handling

Storage:	RT,4 °C,-20 °C
Storage Comment:	Store vials at 4°C prior to opening. Centrifuge product if not completely clear after standing at room temperature. This product is stable for 6 months at 4°C as an undiluted liquid. Dilute only prior to immediate use. For extended storage freeze at -20°C or below for 12 months. Avoid cycles of freezing and thawing.

Images



ELISA

Image 1. Mouse MIP-2 Accusignal ELISA Kit Mouse MIP-2 AccuSignal ELISA Kit standard curve. Assay Range: 15.6pg/ml-1000pg/ml. Sensitivity: <5pg/ml.