

Datasheet for ABIN6720022
Thrombospondin 1 ELISA Kit[Go to Product page](#)**1** Image

Overview

| | |
|--------------------------|--------------------------|
| Quantity: | 1 kit |
| Target: | Thrombospondin 1 (THBS1) |
| Reactivity: | Human |
| Method Type: | Sandwich ELISA |
| Detection Range: | 1.56 ng/mL - 100 ng/mL |
| Minimum Detection Limit: | 1.56 ng/mL |
| Application: | ELISA |

Product Details

| | |
|--------------------|--|
| Purpose: | Sandwich ELISA for Quantitative Detection of Antigen |
| Sample Type: | Cell Culture Supernatant, Plasma (EDTA - heparin), Serum |
| Analytical Method: | Quantitative |
| Detection Method: | Colorimetric |

| | |
|------------------|--|
| Characteristics: | <p>Synonyms: THBS 1, THBS, THBS1, Thrombospondin 1, Thrombospondin-1, Tsp 1, TSP, Tsp1, TSP1_HUMAN</p> <p>Background: Thrombospondin 1, also known as THBS1, is a protein that in humans is encoded by the THBS1 gene. Thrombospondin 1 is a subunit of a disulfide-linked homotrimeric protein. This protein is an adhesive glycoprotein that mediates cell-to-cell and cell-to-matrix interactions. By in situ hybridization, the THBS1 gene was mapped to human 15q15 and the cognate gene to mouse chromosome 2(region F) and was localized to 15q11-qter by Southern analysis of human-rodent somatic cell hybrids. Thrombospondin I is a multimodular secreted</p> |
|------------------|--|

Product Details

protein that associates with the extracellular matrix and possesses a variety of biologic functions, including a potent antiangiogenic activity. Other thrombospondin genes include thrombospondins II, III, and IV.

Gene Name: THBS1

Production: Natural and recombinant human THBS1. There is no detectable cross-reactivity with other relevant proteins.

Standard: Expression system for standard: NSO, Immunogen sequence: N19-P1170

Target Details

| | |
|-------------------|---|
| Target: | Thrombospondin 1 (THBS1) |
| Alternative Name: | THBS1 - TSP1 (THBS1 Products) |
| Gene ID: | 7057 |
| NCBI Accession: | NP_003237 |
| UniProt: | P07996 |
| Pathways: | Autophagy |

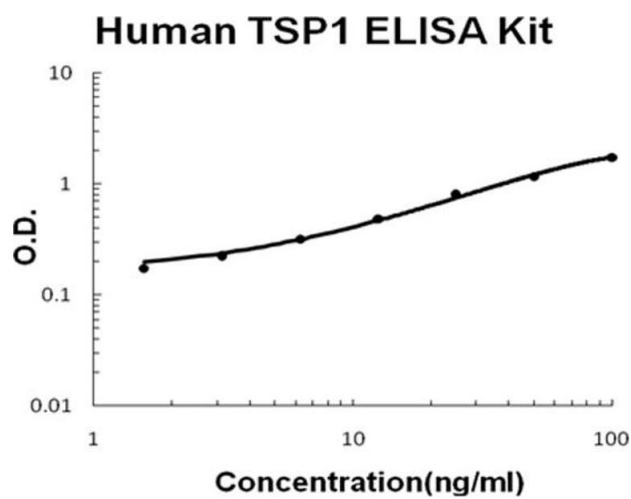
Application Details

| | |
|--------------------|---|
| Application Notes: | <p>Application Note: Useful in Sandwich ELISA for Quantitative Detection of Antigen. Aliquot 0.1 mL per well of the 100 ng/mL, 50 ng/mL, 25 ng/mL, 1.25 ng/mL, 6.25 ng/mL, 3.12 ng/mL, 1.56 ng/mL human THBS1 standard solutions into the precoated 96-well plate. Add 0.1 mL of the sample diluent buffer into the control well (Zero well). Add 0.1 mL of each properly diluted sample of human cell culture supernates, serum or plasma(heparin, EDTA) to each empty well. We recommend that each human THBS1 standard solution and each sample is measured in duplicate.</p> <p>Blood Product Anticoagulant: Heparin Sodium</p> <p>ELISA Dilution: 1.56 ng/mL-100 ng/mL</p> <p>Other Performance Data: DOE: 2-8° C - 03/18/19 -20° C - 09/06/19</p> |
| Sample Volume: | 100 µL |
| Plate: | Pre-coated |
| Restrictions: | For Research Use only |

Handling

| | |
|------------------|---|
| Storage: | RT,4 °C,-20 °C |
| Storage Comment: | Store vials at 4°C prior to opening. Centrifuge product if not completely clear after standing at room temperature. This product is stable for 6 months at 4°C as an undiluted liquid. Dilute only prior to immediate use. For extended storage freeze at -20°C or below for 12 months. Avoid cycles of freezing and thawing. |

Images



ELISA

Image 1. Human THBS1/TSP1 Accusignal ELISA Kit Human THBS1/TSP1 AccuSignal ELISA Kit standard curve. Assay Range: 1.56ng/ml-100ng/ml. Sensitivity: <50pg/ml.