

Datasheet for ABIN6720127
CD36 (SR-B3) ELISA Kit



[Go to Product page](#)

1 Image

Overview

Quantity:	1 kit
Target:	CD36 (SR-B3)
Reactivity:	Mouse
Method Type:	Sandwich ELISA
Detection Range:	156 pg/mL - 10000 pg/mL
Minimum Detection Limit:	156 pg/mL
Application:	ELISA

Product Details

Purpose:	Mouse CD36 - SR-B3 Sandwich ELISA Kit for Quantitative Detection
Brand:	AccuSignal™
Sample Type:	Cell Culture Supernatant, Plasma (EDTA - heparin), Serum
Analytical Method:	Quantitative
Detection Method:	Colorimetric
Specificity:	Production: Natural and recombinant mouse CD36. There is no detectable cross-reactivity with other relevant proteins.
Sensitivity:	< 10 pg/mL
Components:	<ul style="list-style-type: none">• Antibody-coated 96-well plate• Target Protein Standard• Detection antibody

Product Details

- Detection reagent
- Diluent buffers
- Wash buffers
- Substrate Solution
- Stop solutions
- Adhesive covers

Target Details

Target: CD36 (SR-B3)

Alternative Name: CD36/SR-B3

Background: Synonyms: CD36 antigen, CD36 antigen (collagen type I receptor thrombospondin receptor), CD36 Molecule, CD36 Molecule (thrombospondin receptor), CHDS7, Cluster determinant 36, FAT, Fatty acid translocase, Glycoprotein IIIb, GP3B, GP4, GPIIIB, GPIV, Leukocyte differentiation antigen CD36, PAS 4 protein, PAS IV, PASIV, Platelet collagen receptor, Platelet glycoprotein 4, Platelet glycoprotein IV, SCARB3, Scavenger receptor class B member 3, Thrombospondin receptor

Background: CD36(Cluster of Differentiation 36) is an integral membrane protein found on the surface of many cell types in vertebrate animals and is also known as FAT, SCARB3, GP88, glycoprotein IV(gpIV) and glycoprotein IIIb(gpIIIb). The human CD36 is a member of a gene family of structurally related glycoproteins and functions as a receptor for collagen type I and thrombospondin. The use of a CD36 genomic probe has allowed the localization of the CD36 locus to the 7q11.2 band by fluorescence in situ hybridization coupled with GTG-banding. CED-1/SCARF1 and C03F11.3/CD36 are beta-glucan binding receptors and define an evolutionarily conserved pathway for the innate sensing of fungal pathogens.

Gene ID: 12491

NCBI Accession: [NP_001153027](#)

UniProt: [Q08857](#)

Application Details

Application Notes: Useful in Sandwich ELISA for Quantitative Detection of Antigen. Aliquot 0.1 mL per well of the 10000pg/mL, 5000pg/mL, 2500pg/mL, 1250pg/mL, 625pg/mL, 312pg/mL, 156pg/mL mouse CD36 standard solutions into the precoated 96-well plate. Add 0.1 mL of the sample diluent buffer into the control well (Zero well). Add 0.1 mL of each properly diluted sample of mouse cell culture supernates, serum or plasma(heparin, EDTA) to each empty well. It is recommended

Application Details

that each mouse CD36 standard solution and each sample be measured in duplicate.

Comment: Standard: Expression system for standard: CHO, Immunogen sequence: G30-K439

Sample Volume: 100 μ L

Plate: Pre-coated

Restrictions: For Research Use only

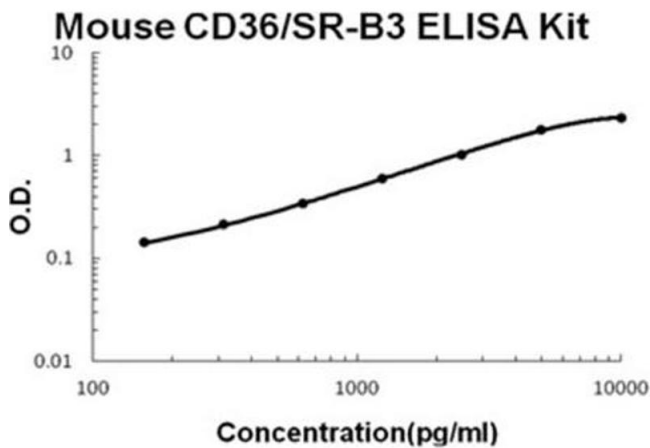
Handling

Storage: 4 °C, -20 °C

Storage Comment: Store vials at 4°C prior to opening. Centrifuge product if not completely clear after standing at room temperature. This product is stable for 6 months at 4°C as an undiluted liquid. Dilute only prior to immediate use. For extended storage freeze at -20°C or below for 12 months. Avoid cycles of freezing and thawing.

Expiry Date: 12 months

Images



ELISA

Image 1. Mouse CD36/SR-B3 Accusignal ELISA Kit Mouse CD36/SR-B3 AccuSignal ELISA Kit standard curve. Assay Range: 156pg/ml-10000pg/ml. Sensitivity: <10pg/ml.