



[Go to Product page](#)

Datasheet for ABIN6720249

NBL1 ELISA Kit

1 Image

Overview

Quantity:	1 kit
Target:	NBL1
Reactivity:	Mouse
Method Type:	Sandwich ELISA
Detection Range:	62.5 pg/mL - 4000 pg/mL
Minimum Detection Limit:	62.5 pg/mL
Application:	ELISA

Product Details

Purpose:	Sandwich ELISA for Quantitative Detection of Antigen
Sample Type:	Cell Culture Supernatant, Plasma (EDTA - heparin), Serum
Analytical Method:	Quantitative
Detection Method:	Colorimetric
Characteristics:	<p>Synonyms: D1S1733E, DAN, DAN domain family member 1, DAND 1, DAND1, Differential screening selected gene aberrant in neuroblastoma, MGC8972, NB, NBL 1, Neuroblastoma candidate region suppression of tumorigenicity 1, Neuroblastoma suppression of tumorigenicity 1, Neuroblastoma suppressor of tumorigenicity 1, NO 3, NO3, Zinc finger protein DAN</p> <p>Background: Differential screening-selected gene aberrative in neuroblastoma (DAN) is a member of the DAN family of secreted glycoproteins that are putative BMP antagonists. The NBL1 gene, also known as DAN, is originally cloned from a normal rat fibroblast cDNA library by</p>

Product Details

a differential screening method. The human DAN gene is mapped to chromosome 1p36.13-p36. It is found that the DAN gene possesses a tumor suppressive activity when overexpressed in v-src transformed cells.

Gene Name: NBL1

Production: Natural and recombinant mouse DAN. There is no detectable cross-reactivity with other relevant proteins.

Standard: Expression system for standard: NSO, Immunogen sequence: A17-D178

Target Details

Target: NBL1

Alternative Name: DAN - NBL1 ([NBL1 Products](#))

Gene ID: 17965

NCBI Accession: [NP_032701](#)

UniProt: [Q61477](#)

Application Details

Application Notes: Application Note: Useful in Sandwich ELISA for Quantitative Detection of Antigen. Aliquot 0.1 mL per well of the 4000pg/mL, 2000pg/mL, 1000pg/mL, 500pg/mL, 250pg/mL, 125pg/mL, 62.5pg/mL mouse DAN standard solutions into the precoated 96-well plate. Add 0.1 mL of the sample diluent buffer into the control well (Zero well). Add 0.1 mL of each properly diluted sample of mouse cell culture supernates, serum or plasma(heparin, EDTA) to each empty well. We recommend that each mouse DAN standard solution and each sample is measured in duplicate.

Blood Product Anticoagulant: Heparin Sodium

ELISA Dilution: 62.5pg/mL-4000pg/mL

Sample Volume: 100 µL

Plate: Pre-coated

Restrictions: For Research Use only

Handling

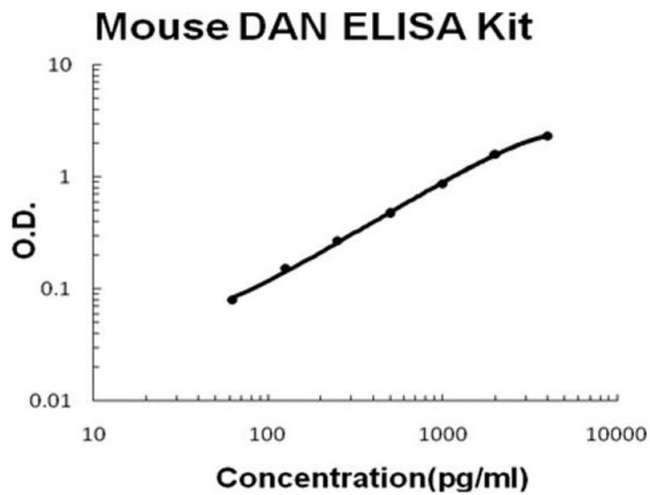
Storage: RT, 4 °C, -20 °C

Storage Comment: Store vials at 4°C prior to opening. Centrifuge product if not completely clear after standing at

Handling

room temperature. This product is stable for 6 months at 4°C as an undiluted liquid. Dilute only prior to immediate use. For extended storage freeze at -20°C or below for 12 months. Avoid cycles of freezing and thawing.

Images



ELISA

Image 1. Mouse DAN/NBL1 Accusignal ELISA Kit Mouse DAN/NBL1 AccuSignal ELISA Kit standard curve. Assay Range: 62.5pg/ml-4000pg/ml. Sensitivity: <10pg/ml.