



Datasheet for ABIN6720287

sL-Selectin ELISA Kit



[Go to Product page](#)

1 Image

Overview

Quantity:	1 kit
Target:	sL-Selectin
Reactivity:	Rat
Method Type:	Sandwich ELISA
Detection Range:	625 pg/mL - 40000 pg/mL
Minimum Detection Limit:	625 pg/mL
Application:	ELISA

Product Details

Purpose:	Sandwich ELISA for Quantitative Detection of Antigen
Sample Type:	Cell Culture Supernatant, Plasma (EDTA - heparin), Serum
Analytical Method:	Quantitative
Detection Method:	Colorimetric
Characteristics:	<p>Synonyms: A.11, AI528707, CD62 antigen ligand, CD62 antigen-like family member L, gp90 MEL, hLHRc, IgA nephropathy, susceptibility to, includedL Selectin, LAM1, LECAM1, Leu8, Leukocyte adhesion molecule 1, Leukocyte surface antigen Leu8, Leukocyte-endothelial cell adhesion molecule 1, LNHR, LSEL, Ly-22, Ly-m22, LYAM1, Lymph node homing receptor, Lymphocyte adhesion molecule 1, Lymphocyte antigen 22, Lymphocyte surface MEL-14 antigen, PLNHR, Selectin L, Selectin, lymphocyte, SELL, TQ1</p> <p>Background: L-selectin, also known as CD62L, is a cell adhesion molecule found on leukocytes. It belongs to the selectin family of proteins, which recognize sialylated carbohydrate groups. It</p>

Product Details

is cleaved by ADAM17.SELL(L-selectin) is a cell surface component that is a member of a family of adhesion/homing receptors which play important roles in leukocyte-endothelial cell interactions. The molecule is composed of multiple domains: one homologous to lectins, one to epidermal growth factor, and two to the consensus repeat units found in C3/C4 binding proteins.¹ L-selectin acts as a "homing receptor" for leukocytes to enter secondary lymphoid tissues via high endothelial venules. Ligands present on endothelial cells will bind to leukocyte expressing L-selectin, slowing leukocyte trafficking through the blood, and facilitating entry into a secondary lymphoid organ at that point².

Gene Name: SELL

Production: Natural and recombinant rat sL-Selectin. There is no detectable cross-reactivity with other relevant proteins.

Standard: Expression system for standard: NSO, Immunogen sequence: W39-N332

Target Details

Target: sL-Selectin

Alternative Name: sL-Selectin ([sL-Selectin Products](#))

Gene ID: 29259

NCBI Accession: [NP_062050](#)

UniProt: [Q63762](#)

Application Details

Application Notes: Application Note: Useful in Sandwich ELISA for Quantitative Detection of Antigen. Aliquot 0.1 mL per well of the 40000pg/mL, 20000pg/mL, 10000pg/mL, 5000pg/mL, 2500pg/mL, 1250pg/mL, 625pg/mL rat L-Selectin standard solutions into the precoated 96-well plate. Add 0.1 mL of the sample diluent buffer into the control well (Zero well). Add 0.1 mL of each properly diluted sample of rat cell culture supernates, serum or plasma (heparin, EDTA) to each empty well. It is recommended that each rat L-Selectin standard solution and each sample be measured in duplicate.

Blood Product Anticoagulant: Heparin Sodium

ELISA Dilution: 625pg/mL-40000pg/mL

Sample Volume: 100 µL

Plate: Pre-coated

Application Details

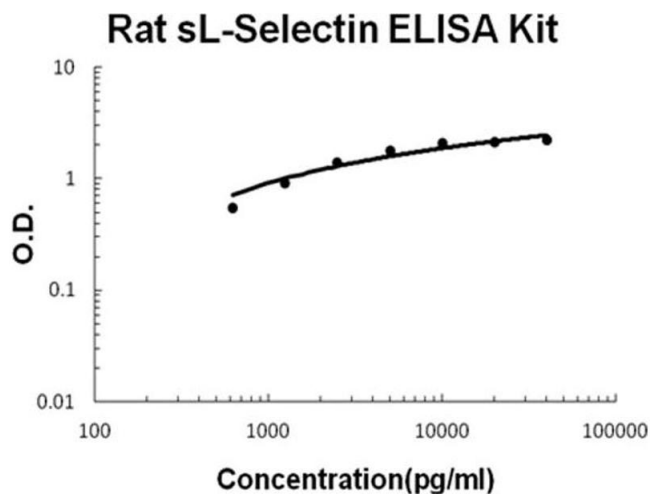
Restrictions: For Research Use only

Handling

Storage: RT,4 °C,-20 °C

Storage Comment: Store vials at 4°C prior to opening. Centrifuge product if not completely clear after standing at room temperature. This product is stable for 6 months at 4°C as an undiluted liquid. Dilute only prior to immediate use. For extended storage freeze at -20°C or below for 12 months. Avoid cycles of freezing and thawing.

Images



ELISA

Image 1. Rat sL-Selectin Accusignal ELISA Kit Rat sL-Selectin Accusignal ELISA Kit standard curve. Assay Range: 625pg/ml-40000pg/ml. Sensitivity: <20pg/ml.