

Datasheet for ABIN6720312

Aggrecan ELISA Kit

1 Image

[Go to Product page](#)

Overview

Quantity:	1 kit
Target:	Aggrecan (ACAN)
Reactivity:	Human
Method Type:	Sandwich ELISA
Detection Range:	1.56 ng/mL - 100 ng/mL
Minimum Detection Limit:	1.56 ng/mL
Application:	ELISA

Product Details

Purpose:	Sandwich ELISA for Quantitative Detection of Antigen
Sample Type:	Cell Culture Supernatant, Serum, Urine
Analytical Method:	Quantitative
Detection Method:	Colorimetric
Characteristics:	<p>Synonyms: ACAN, AGC1, AGCAN, Aggrecan 1, Aggrecan core protein, Aggrecan proteoglycan, Aggrecan structural proteoglycan of cartilage, Aggrecan1, ATEGQV, Cartilage specific proteoglycan core protein, Chondroitin sulfate proteoglycan 1, Chondroitin sulfate proteoglycan 1 large aggregating proteoglycan antigen identified by monoclonal antibody A0122, Chondroitin sulfate proteoglycan core protein 1, CSPG1, CSPGCP, JSCATE, Large aggregating proteoglycan, mcspg, mgsk16, MSK16, SEDK</p> <p>Background: Aggrecan, also known as cartilage-specific proteoglycan core protein (CSPCP) or chondroitin sulfate proteoglycan 1, is a protein that in humans is encoded by the ACAN gene. It</p>

Product Details

is a critical component for cartilage structure and the function of joints. Aggrecan provides intervertebral disc and cartilage with the ability to resist compressive loads. The localized high concentrations of aggrecan provide the osmotic properties necessary for normal tissue function with the GAGs producing the swelling pressure that counters compressive loads on the tissue. This functional ability is dependent on a high GAG/aggrecan concentration being present in the tissue extracellular matrix. Also, Aggrecan plays an important role in the organization of the extracellular spaces between neurons in the brain.

Gene Name: ACAN

Production: Natural and recombinant human Aggrecan. There is no detectable cross-reactivity with other relevant proteins.

Standard: Expression system for standard: NSO, Immunogen sequence: V20-G675

Target Details

Target: Aggrecan (ACAN)

Alternative Name: Aggrecan ([ACAN Products](#))

Gene ID: 176

UniProt: [P16112](#)

Pathways: [Glycosaminoglycan Metabolic Process, Dicarboxylic Acid Transport](#)

Application Details

Application Notes: Application Note: Useful in Sandwich ELISA for Quantitative Detection of Antigen. Aliquot 0.1 mL per well of the 100 ng/mL, 50 ng/mL, 25 ng/mL, 12.5 ng/mL, 6.25 ng/mL, 3.12 ng/mL, 1.56 ng/mL human Aggrecan standard solutions into the precoated 96-well plate. Add 0.1 mL of the sample diluent buffer into the control well (Zero well). Add 0.1 mL of each properly diluted sample of human cell culture supernates, serum or urine to each empty well. It is recommended that each human Aggrecan standard solution and each sample be measured in duplicate.

ELISA Dilution: 1.56 ng/mL-100 ng/mL

Sample Volume: 100 μ L

Plate: Pre-coated

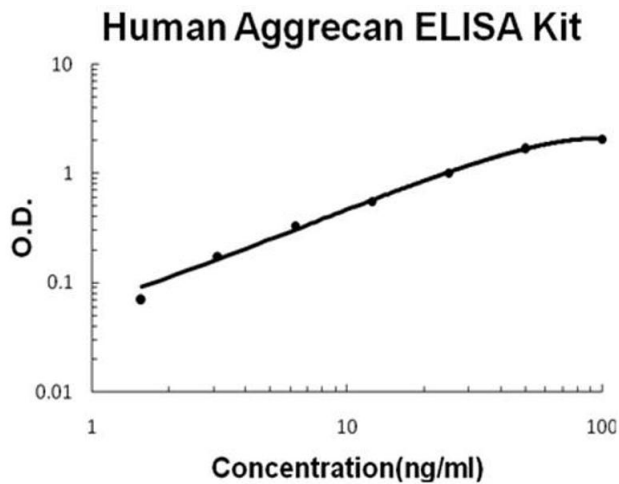
Restrictions: For Research Use only

Handling

Storage: RT,4 °C,-20 °C

Storage Comment: Store vials at 4°C prior to opening. Centrifuge product if not completely clear after standing at room temperature. This product is stable for 6 months at 4°C as an undiluted liquid. Dilute only prior to immediate use. For extended storage freeze at -20°C or below for 12 months. Avoid cycles of freezing and thawing.

Images



ELISA

Image 1. Human Aggrecan Accusignal ELISA Kit Human Aggrecan AccuSignal ELISA Kit standard curve. Assay Range: 1.56ng/ml-100ng/ml. Sensitivity: <50pg/ml.