

Datasheet for ABIN672231
anti-TUBB3 antibody (AA 31-130)



[Go to Product page](#)

2 Images

Overview

Quantity:	100 µL
Target:	TUBB3
Binding Specificity:	AA 31-130
Reactivity:	Human, Mouse, Rat
Host:	Rabbit
Clonality:	Polyclonal
Conjugate:	This TUBB3 antibody is un-conjugated
Application:	Western Blotting (WB), ELISA, Flow Cytometry (FACS), Immunohistochemistry (Paraffin-embedded Sections) (IHC (p)), Immunofluorescence (Paraffin-embedded Sections) (IF (p)), Immunofluorescence (Cultured Cells) (IF (cc)), Immunohistochemistry (Frozen Sections) (IHC (fro))

Product Details

Immunogen:	KLH conjugated synthetic peptide derived from human Tubulin-Beta 3
Isotype:	IgG
Specificity:	Based on the similarity among the proteins in this family, there is a slight chance that this antibody could recognize TBB4A and TBB6.
Cross-Reactivity:	Human, Mouse, Rat
Purification:	Purified by Protein A.

Target Details

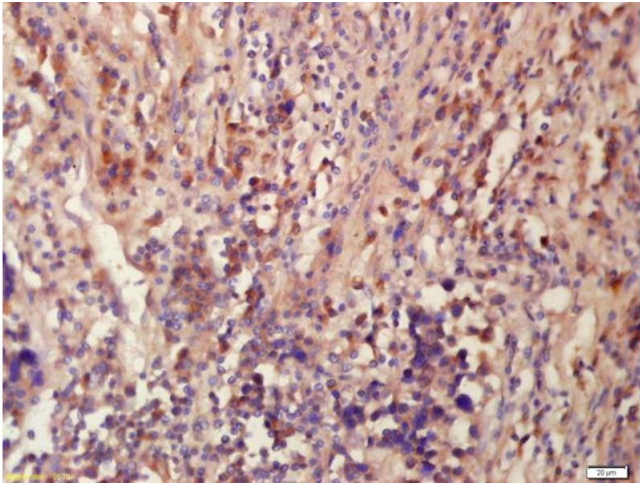
Target:	TUBB3
Alternative Name:	Tubulin-Beta 3 (TUBB3 Products)
Background:	<p>Synonyms: CDCBM, FEOM3, TUBB4, CDCBM1, CFEOM3, beta-4, CFEOM3A, Tubulin beta-3 chain, Tubulin beta-4 chain, Tubulin beta-III, TUBB3</p> <p>Background: Tubulin is the major constituent of microtubules. It binds two moles of GTP, one at an exchangeable site on the beta chain and one at a non-exchangeable site on the alpha chain. TUBB3 plays a critical role in proper axon guidance and maintenance.</p>
Gene ID:	10381
UniProt:	Q13509
Pathways:	Microtubule Dynamics, M Phase

Application Details

Application Notes:	WB 1:300-5000 ELISA 1:500-1000 FCM 1:20-100 IHC-P 1:200-400 IHC-F 1:100-500 IF(IHC-P) 1:50-200 IF(IHC-F) 1:50-200 IF(ICC) 1:50-200
Restrictions:	For Research Use only

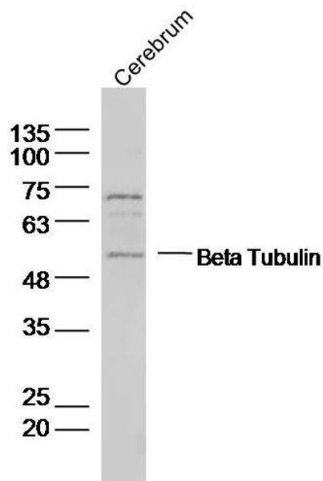
Handling

Format:	Liquid
Concentration:	1 µg/µL
Buffer:	0.01M TBS(pH 7.4) with 1 % BSA, 0.02 % Proclin300 and 50 % Glycerol.
Preservative:	ProClin
Precaution of Use:	This product contains ProClin: a POISONOUS AND HAZARDOUS SUBSTANCE, which should be handled by trained staff only.
Storage:	4 °C,-20 °C
Storage Comment:	Shipped at 4°C. Store at -20°C for one year. Avoid repeated freeze/thaw cycles.



Immunohistochemistry

Image 1. Formalin-fixed and paraffin embedded human lung carcinoma labeled with Anti-Tubulin-Beta Polyclonal Antibody, Unconjugated (ABIN672231) at 1:200 followed by conjugation to the secondary antibody and DAB staining



Western Blotting

Image 2. Rat Cerebrum lysates probed with Beta Tubulin Polyclonal Antibody, Unconjugated at 1:1000 dilution and 4°C overnight incubation. Followed by conjugated secondary antibody incubation at 1:10000 for 60 min at 37°C.