

Datasheet for ABIN672456
anti-PEDF antibody (AA 201-300)

3 Images

[Go to Product page](#)

Overview

Quantity:	100 µL
Target:	PEDF (SERPINF1)
Binding Specificity:	AA 201-300
Reactivity:	Human, Rat
Host:	Rabbit
Clonality:	Polyclonal
Conjugate:	This PEDF antibody is un-conjugated
Application:	Western Blotting (WB), ELISA, Immunofluorescence (Cultured Cells) (IF (cc)), Immunofluorescence (Paraffin-embedded Sections) (IF (p)), Immunohistochemistry (Paraffin- embedded Sections) (IHC (p)), Immunohistochemistry (Frozen Sections) (IHC (fro))

Product Details

Immunogen:	KLH conjugated synthetic peptide derived from mouse PEDF
Isotype:	IgG
Cross-Reactivity:	Human, Rat
Predicted Reactivity:	Mouse,Dog,Cow,Pig
Purification:	Purified by Protein A.

Target Details

Target:	PEDF (SERPINF1)
---------	-----------------

Target Details

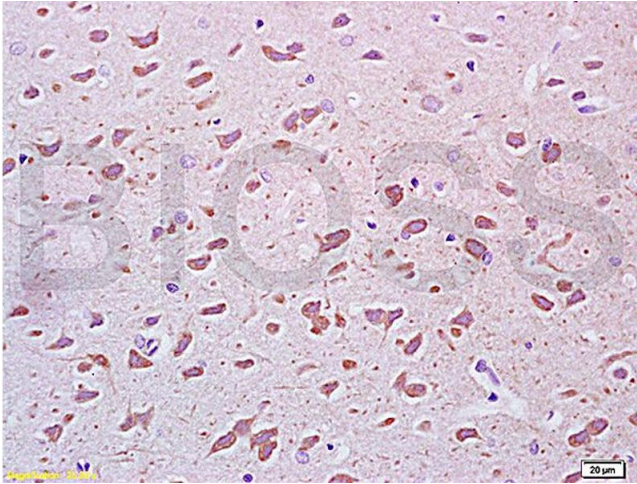
Alternative Name:	PEDF (SERPINF1 Products)
Background:	<p>Synonyms: Pedf, Sdf3, EPC-1, Pedfl, AI195227, Pigment epithelium-derived factor, Caspin, Serpin F1, Stromal cell-derived factor 3, SDF-3, Serpinf1</p> <p>Background: Neurotrophic protein, induces extensive neuronal differentiation in retinoblastoma cells. Potent inhibitor of angiogenesis. As it does not undergo the S (stressed) to R (relaxed) conformational transition characteristic of active serpins, it exhibits no serine protease inhibitory activity.</p>
Gene ID:	20317
UniProt:	P97298

Application Details

Application Notes:	<p>WB 1:300-5000</p> <p>ELISA 1:500-1000</p> <p>IHC-P 1:200-400</p> <p>IHC-F 1:100-500</p> <p>IF(IHC-P) 1:50-200</p> <p>IF(IHC-F) 1:50-200</p> <p>IF(ICC) 1:50-200</p>
Restrictions:	For Research Use only

Handling

Format:	Liquid
Concentration:	1 µg/µL
Buffer:	0.01M TBS(pH 7.4) with 1 % BSA, 0.02 % Proclin300 and 50 % Glycerol.
Preservative:	ProClin
Precaution of Use:	This product contains ProClin: a POISONOUS AND HAZARDOUS SUBSTANCE, which should be handled by trained staff only.
Storage:	4 °C,-20 °C
Storage Comment:	Shipped at 4°C. Store at -20°C for one year. Avoid repeated freeze/thaw cycles.
Expiry Date:	12 months



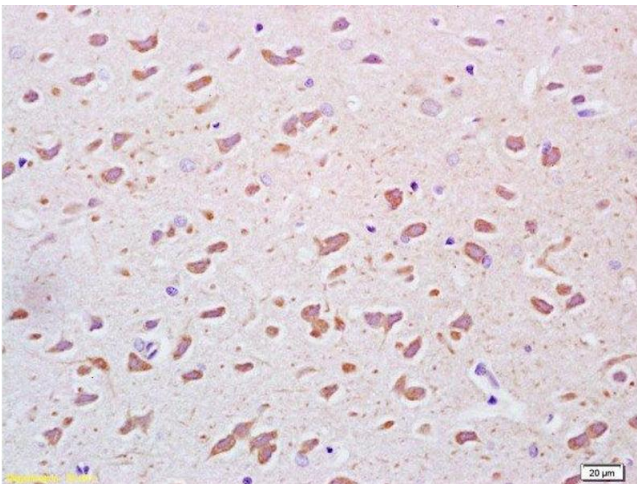
Immunohistochemistry

Image 1. Formalin-fixed and paraffin embedded rat brain tissue labeled Anti-PEGF Polyclonal Antibody, Unconjugated (ABIN672456) at 1:200, followed by conjugation to the secondary antibody and DAB staining



Immunofluorescence

Image 2. Formalin-fixed and paraffin embedded rat eye, ciliary body labeled Anti-PEGF Polyclonal Antibody, Unconjugated (ABIN672456) at 1:200, followed by conjugation to the secondary antibody Goat Anti-Rabbit IgG, Cy3 conjugated used at 1:200 dilution for 40 minutes at 37°C.



Immunohistochemistry (Paraffin-embedded Sections)

Image 3. Formalin-fixed and paraffin embedded rat brain tissue labeled Anti-PEGF Polyclonal Antibody, Unconjugated at 1:200, followed by conjugation to the secondary antibody and DAB staining