

Datasheet for ABIN672636
anti-CTGF antibody (AA 221-349)[Go to Product page](#)

4 Images

5 Publications

Overview

Quantity:	100 µL
Target:	CTGF
Binding Specificity:	AA 221-349
Reactivity:	Human, Mouse, Rat
Host:	Rabbit
Clonality:	Polyclonal
Conjugate:	This CTGF antibody is un-conjugated
Application:	Western Blotting (WB), ELISA, Immunohistochemistry (Paraffin-embedded Sections) (IHC (p)), Flow Cytometry (FACS), Immunofluorescence (Cultured Cells) (IF (cc)), Immunofluorescence (Paraffin-embedded Sections) (IF (p)), Immunohistochemistry (Frozen Sections) (IHC (fro))

Product Details

Immunogen:	KLH conjugated synthetic peptide derived from human CTGF
Isotype:	IgG
Cross-Reactivity:	Human, Mouse, Rat
Predicted Reactivity:	Dog,Cow,Pig,Chicken
Purification:	Purified by Protein A.

Target Details

Target:	CTGF
---------	------

Target Details

Alternative Name:	CTGF (CTGF Products)
Background:	<p>Synonyms: CCN2, NOV2, HCS24, IGFBP8, Connective tissue growth factor, CCN family member 2, Hypertrophic chondrocyte-specific protein 24, Insulin-like growth factor-binding protein 8, IBP-8, IGF-binding protein 8, IGFBP-8, CTGF</p> <p>Background: Major connective tissue mitogen secreted by vascular endothelial cells. Promotes proliferation and differentiation of chondrocytes. Mediates heparin- and divalent cation-dependent cell adhesion in many cell types including fibroblasts, myofibroblasts, endothelial and epithelial cells. Enhances fibroblast growth factor-induced DNA synthesis.</p>
Gene ID:	1490
UniProt:	P29279
Pathways:	Regulation of Lipid Metabolism by PPARalpha , Positive Regulation of Endopeptidase Activity , Growth Factor Binding

Application Details

Application Notes:	WB 1:300-5000 ELISA 1:500-1000 FCM 1:20-100 IHC-P 1:200-400 IHC-F 1:100-500 IF(IHC-P) 1:50-200 IF(IHC-F) 1:50-200 IF(ICC) 1:50-200
Restrictions:	For Research Use only

Handling

Format:	Liquid
Concentration:	1 µg/µL
Buffer:	0.01M TBS(pH 7.4) with 1 % BSA, 0.02 % Proclin300 and 50 % Glycerol.
Preservative:	ProClin
Precaution of Use:	This product contains ProClin: a POISONOUS AND HAZARDOUS SUBSTANCE, which should be handled by trained staff only.

Handling

Storage: 4 °C, -20 °C

Storage Comment: Shipped at 4°C. Store at -20°C for one year. Avoid repeated freeze/thaw cycles.

Expiry Date: 12 months

Publications

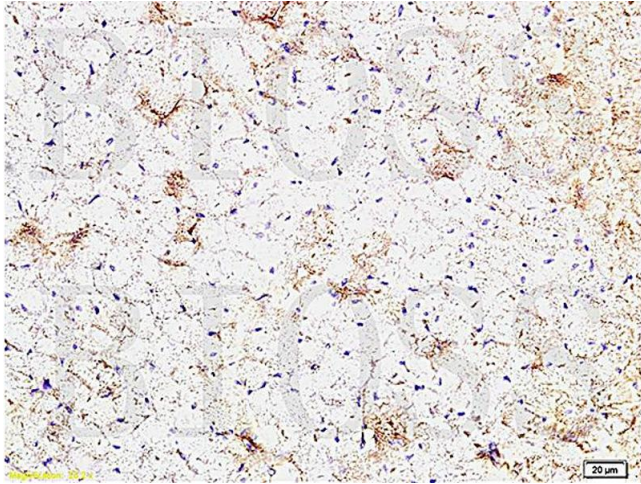
Product cited in: Han, Zhang, Zhong, Wang, Zhang, Chen: "MicroRNA-145 Inhibits Cell Migration and Invasion and Regulates Epithelial-Mesenchymal Transition (EMT) by Targeting Connective Tissue Growth Factor (CTGF) in Esophageal Squamous Cell Carcinoma." in: **Medical science monitor : international medical journal of experimental and clinical research**, Vol. 22, pp. 3925-3934, (2017) ([PubMed](#)).

Al-Hamilly, Radwan, Abdul-Rahman, Mourad, Grawish: "Biological roles of KGF, CTGF and TGF- β in cyclosporine-A- and phenytoin- induced gingival overgrowth: A comparative experimental animal study." in: **Archives of oral biology**, Vol. 66, pp. 38-43, (2016) ([PubMed](#)).

Ciamporcero, Shen, Ramakrishnan, Yu Ku, Chintala, Shen, Adelaiye, Miles, Ullio, Pizzimenti, Daga, Azabdaftari, Attwood, Johnson, Zhang, Barrera, Pili: "YAP activation protects urothelial cell carcinoma from treatment-induced DNA damage." in: **Oncogene**, (2015) ([PubMed](#)).

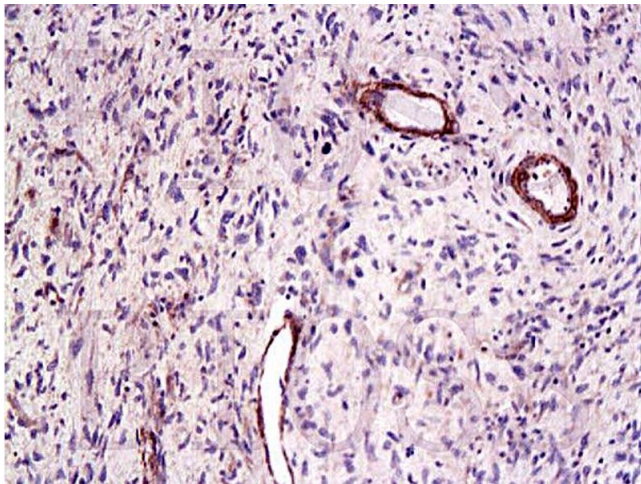
Guo, Zhang, Mu, Liu, Yuan, Ren, Wang: "High-salt intake suppressed microRNA-133a expression in Dahl SS rat myocardium." in: **International journal of molecular sciences**, Vol. 15, Issue 6, pp. 10794-805, (2015) ([PubMed](#)).

Tian, Lv, Yang, Zhang, Yu, Zhu, Xiao, Zhu: "Effects of vitamin D on renal fibrosis in diabetic nephropathy model rats." in: **International journal of clinical and experimental pathology**, Vol. 7, Issue 6, pp. 3028-37, (2014) ([PubMed](#)).



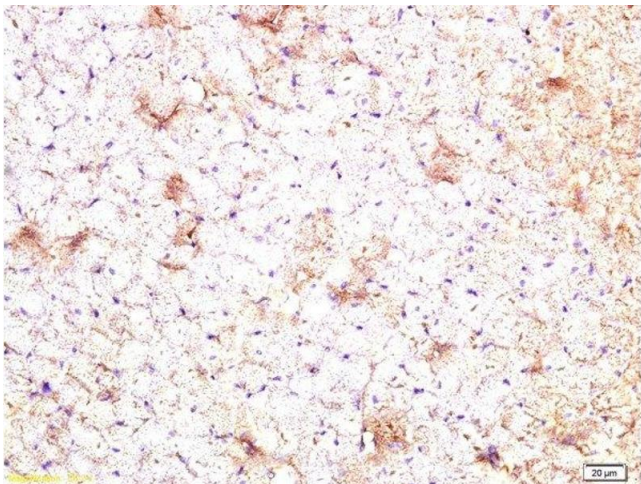
Immunohistochemistry

Image 1. Formalin-fixed and paraffin embedded rat heart tissue labeled Anti-CTGF Polyclonal Antibody, Unconjugated (ABIN672636) at 1:200, followed by conjugation to the secondary antibody and DAB staining



Immunohistochemistry

Image 2. Formalin-fixed and paraffin embedded human laryngeal cancer labeled Anti-CTGF Polyclonal Antibody, Unconjugated (ABIN672636) at 1:200, followed by conjugation to the secondary antibody and DAB staining



Immunohistochemistry (Paraffin-embedded Sections)

Image 3. Formalin-fixed and paraffin embedded rat heart tissue labeled Anti-CTGF Polyclonal Antibody, Unconjugated at 1:200, followed by conjugation to the secondary antibody and DAB staining

Please check the [product details page](#) for more images. Overall 4 images are available for ABIN672636.