



[Go to Product page](#)

Datasheet for ABIN672726
anti-KISS1 antibody (AA 81-145)

2 Images

Overview

Quantity:	100 µL
Target:	KISS1
Binding Specificity:	AA 81-145
Reactivity:	Human, Mouse, Rat
Host:	Rabbit
Clonality:	Polyclonal
Conjugate:	This KISS1 antibody is un-conjugated
Application:	Western Blotting (WB), Immunofluorescence (Cultured Cells) (IF (cc)), Immunofluorescence (Paraffin-embedded Sections) (IF (p)), ELISA, Immunohistochemistry (Frozen Sections) (IHC (fro)), Immunohistochemistry (Paraffin-embedded Sections) (IHC (p))

Product Details

Immunogen:	KLH conjugated synthetic peptide derived from human KISS1
Isotype:	IgG
Specificity:	This antibody detects Kisspeptin-10 region of Kisspeptin.
Cross-Reactivity:	Human, Mouse, Rat
Predicted Reactivity:	Cow, Sheep
Purification:	Purified by Protein A.

Target Details

Target: KISS1

Alternative Name: Kisspeptin ([KISS1 Products](#))

Background: Synonyms: HH13, KiSS-1, Metastasis-suppressor KiSS-1, Kisspeptin-1, KISS1, PP598
Background: Metastasis suppressor protein in malignant melanomas and in some breast cancers. May regulate events downstream of cell-matrix adhesion, perhaps involving cytoskeletal reorganization. Generates a C-terminally amidated peptide, metastin which functions as the endogenous ligand of the G-protein coupled receptor GPR54. Activation of the receptor inhibits cell proliferation and cell migration, key characteristics of tumor metastasis. Kp-1 is a decapeptide derived from the primary translation product, isolated in conditioned medium of first trimester trophoblast. Kp-1, but not other kisspeptins, increased intracellular Ca(2+) levels in isolated first trimester trophoblasts. Kp-1 is a paracrine/endocrine regulator in fine-tuning trophoblast invasion generated by the trophoblast itself. The receptor is also essential for normal gonadotropin-released hormone physiology and for puberty. The hypothalamic KiSS1/GPR54 system is a pivotal factor in central regulation of the gonadotropic axis at puberty and in adulthood.

Gene ID: 3814

UniProt: [Q15726](#)

Application Details

Application Notes: WB 1:300-5000
ELISA 1:500-1000
IHC-P 1:200-400
IHC-F 1:100-500
IF(IHC-P) 1:50-200
IF(IHC-F) 1:50-200
IF(ICC) 1:50-200

Restrictions: For Research Use only

Handling

Format: Liquid

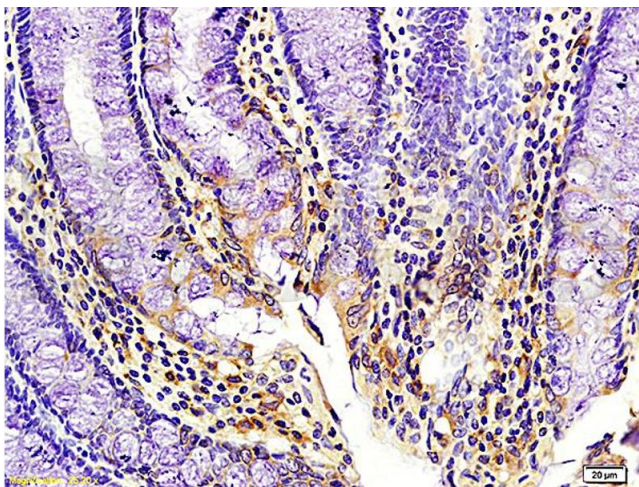
Concentration: 1 µg/µL

Buffer: 0.01M TBS(pH 7.4) with 1 % BSA, 0.02 % Proclin300 and 50 % Glycerol.

Handling

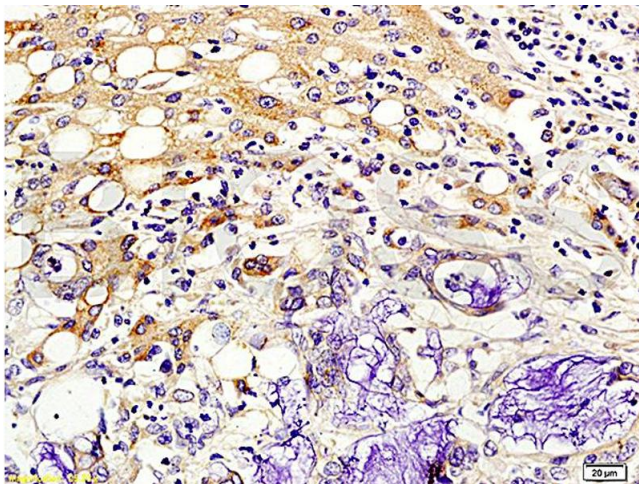
Preservative:	ProClin
Precaution of Use:	This product contains ProClin: a POISONOUS AND HAZARDOUS SUBSTANCE, which should be handled by trained staff only.
Storage:	4 °C,-20 °C
Storage Comment:	Shipped at 4°C. Store at -20°C for one year. Avoid repeated freeze/thaw cycles.
Expiry Date:	12 months

Images



Immunohistochemistry

Image 1. Formalin-fixed and paraffin embedded human colon cancer Rabbit Anti-Kiss 1/Kisspeptin Polyclonal Antibody (ABIN672726), Unconjugated 1:200 followed by conjugation to the secondary antibody and DAB staining.



Immunohistochemistry

Image 2. Formalin-fixed and paraffin embedded human colon cancer labeled with Rabbit Anti-Kiss 1/Kisspeptin Polyclonal Antibody (ABIN672726), Unconjugated 1:200 followed by conjugation to the secondary antibody and DAB staining.