

Datasheet for ABIN672831
anti-Lipin 1 antibody (AA 201-300)

2 Images

[Go to Product page](#)

Overview

Quantity:	100 µL
Target:	Lipin 1 (LPIN1)
Binding Specificity:	AA 201-300
Reactivity:	Rat, Mouse
Host:	Rabbit
Clonality:	Polyclonal
Conjugate:	This Lipin 1 antibody is un-conjugated
Application:	Immunofluorescence (Cultured Cells) (IF (cc)), Immunofluorescence (Paraffin-embedded Sections) (IF (p)), ELISA, Immunohistochemistry (Paraffin-embedded Sections) (IHC (p)), Immunohistochemistry (Frozen Sections) (IHC (fro))

Product Details

Immunogen:	KLH conjugated synthetic peptide derived from mouse Lpin1 protein
Isotype:	IgG
Cross-Reactivity:	Mouse, Rat
Purification:	Purified by Protein A.

Target Details

Target:	Lipin 1 (LPIN1)
Alternative Name:	Lpin1 protein (LPIN1 Products)

Target Details

Background:	<p>Synonyms: fld, Lipin1, Kiaa0188, mKIAA0188, 4631420P06, Phosphatidate phosphatase LPIN1, Fatty liver dystrophy protein, Lipin-1, Lpin1</p> <p>Background: Plays important roles in controlling the metabolism of fatty acids at different levels. Acts as a magnesium-dependent phosphatidate phosphatase enzyme which catalyzes the conversion of phosphatidic acid to diacylglycerol during triglyceride, phosphatidylcholine and phosphatidylethanolamine biosynthesis. Acts also as nuclear transcriptional coactivator for PPARGC1A/PPARA regulatory pathway to modulate lipid metabolism gene expression. Is involved in adipocyte differentiation. Isoform 1 is recruited at the mitochondrion outer membrane and is involved in mitochondrial fission by converting phosphatidic acid to diacylglycerol.</p>
Gene ID:	14245
UniProt:	Q91ZP3
Pathways:	Monocarboxylic Acid Catabolic Process

Application Details

Application Notes:	<p>ELISA 1:500-1000</p> <p>IHC-P 1:200-400</p> <p>IHC-F 1:100-500</p> <p>IF(IHC-P) 1:50-200</p> <p>IF(IHC-F) 1:50-200</p> <p>IF(ICC) 1:50-200</p>
Restrictions:	For Research Use only

Handling

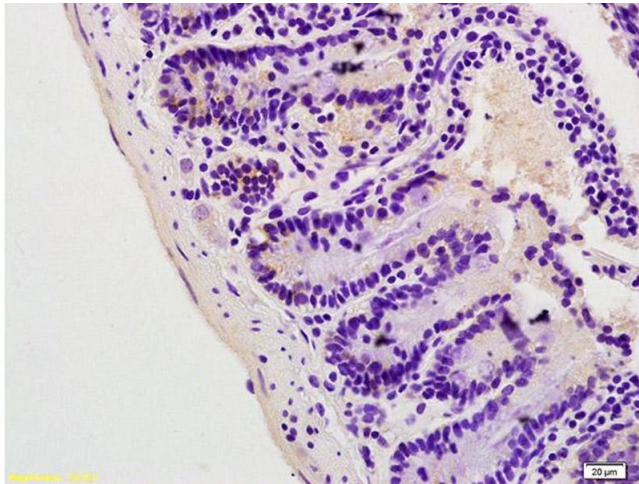
Format:	Liquid
Concentration:	1 µg/µL
Buffer:	0.01M TBS(pH 7.4) with 1 % BSA, 0.02 % Proclin300 and 50 % Glycerol.
Preservative:	ProClin
Precaution of Use:	This product contains ProClin: a POISONOUS AND HAZARDOUS SUBSTANCE, which should be handled by trained staff only.
Storage:	4 °C,-20 °C

Handling

Storage Comment: Shipped at 4°C. Store at -20°C for one year. Avoid repeated freeze/thaw cycles.

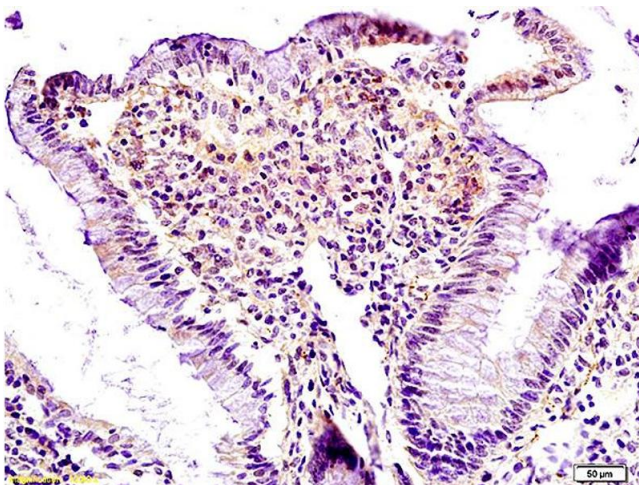
Expiry Date: 12 months

Images



Immunohistochemistry

Image 1. Formalin-fixed and paraffin embedded mouse colon labeled with Anti Lpin1 Polyclonal Antibody, Unconjugated (ABIN672831) at 1:200 followed by conjugation to the secondary antibody and DAB staining.



Immunohistochemistry

Image 2. Formalin-fixed and paraffin embedded rat colon labeled with Anti Lpin1 Polyclonal Antibody, Unconjugated (ABIN672831) at 1:200 followed by conjugation to the secondary antibody and DAB staining.