

Datasheet for ABIN673041

Rabbit anti-Mouse IgA Antibody[Go to Product page](#)**1** Image

Overview

Quantity:	100 µL
Target:	IgA
Reactivity:	Mouse
Host:	Rabbit
Clonality:	Polyclonal
Application:	ELISA, Western Blotting (WB), Immunofluorescence (IF), Immunohistochemistry (Frozen Sections) (IHC (fro)), Immunohistochemistry (Paraffin-embedded Sections) (IHC (p)), Immunofluorescence (Paraffin-embedded Sections) (IF (p))

Product Details

Immunogen:	Mouse IgA protein purified from serum
Isotype:	IgG
Cross-Reactivity:	Mouse
Purification:	affinity Purified by Protein A.

Target Details

Target:	IgA
Abstract:	IgA Products
Target Type:	Antibody
Background:	Optional[synonyms]: Mouse IgA (immunoglobulin A) is a glycosylated protein of 160 kDa and is produced as a monomer or as a J chain-linked dimer. Monomeric IgA constitutes 5-15 % of the

Target Details

serum immunoglobulins whereas dimeric IgA is localized to mucosa surfaces such as saliva, gastrointestinal secretion, bronchial fluids, and milk. Mucosal IgA plays a major role in host defense by neutralizing infectious agents at mucosal surfaces. The production is usually local and antigen-specific IgA-producing B cells can be found in regions under the lamina propria where they mature into dimeric IgA-producing plasma cells. IgA deficiency is the most common immunodeficiency that may affect both serum and mucosal-produced IgA. OR: The secretory component is a component of immunoglobulin A (IgA) which consists of a portion of the polymeric immunoglobulin receptor. Polymeric IgA binds to the polymeric immunoglobulin receptor on the basolateral surface of epithelial cells and is taken up into the cell via transcytosis. The receptor-IgA complex passes through the cellular compartments before being secreted on the luminal surface of the epithelial cells, still attached to the receptor. Proteolysis of the receptor occurs and the dimeric IgA molecule, along with the secretory component, are free to diffuse throughout the lumen.

Application Details

Application Notes: IHC-P 1:500-2000
IF(IHC-P) 1:500-2000

Restrictions: For Research Use only

Handling

Format: Liquid

Concentration: 1 µg/µL

Buffer: 0.01M TBS(pH 7.4) with 1 % BSA, 0.02 % Proclin300 and 50 % Glycerol.

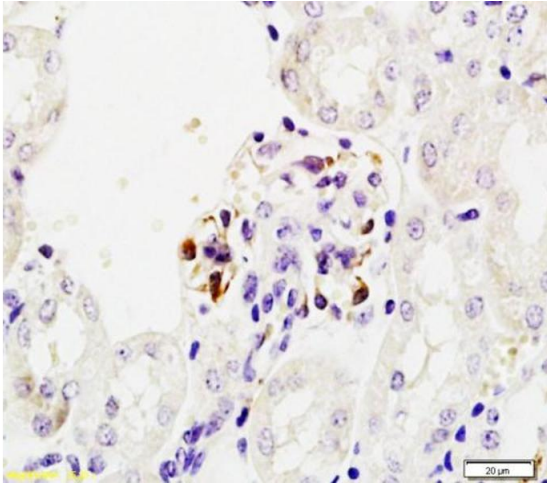
Preservative: ProClin

Precaution of Use: This product contains ProClin: a POISONOUS AND HAZARDOUS SUBSTANCE, which should be handled by trained staff only.

Storage: 4 °C, -20 °C

Storage Comment: Shipped at 4°C. Store at -20°C for one year. Avoid repeated freeze/thaw cycles.

Expiry Date: 12 months



Immunohistochemistry

Image 1. Formalin-fixed and paraffin embedded mouse kidney tissue labeled Anti-Mouse IgA Polyclonal Antibody, Unconjugated at 1:200, followed by conjugation to the secondary antibody and DAB staining