

Datasheet for ABIN6730525  
**UBL5 ELISA Kit**



[Go to Product page](#)

1 Image

## Overview

Quantity:	96 tests
Target:	UBL5
Reactivity:	Human, Mouse, Rat
Method Type:	Competition ELISA
Detection Range:	0.1 ng/mL - 1000 ng/mL
Minimum Detection Limit:	0.1 ng/mL
Application:	ELISA

## Product Details

Purpose:	Human/Mouse/Rat Ubiquitin-like protein 5 EIA Kit optimized for serum and cell culture media. Competition-based ELISA on a 96-well strip plate.
Sample Type:	Cell Culture Supernatant, Serum
Analytical Method:	Quantitative
Detection Method:	Colorimetric
Specificity:	This EIA kit is designed to detect human, mouse, and rat Ubiquitin-like protein 5
Characteristics:	<ul style="list-style-type: none"><li>• Strip plates and additional reagents allow for use in multiple experiments</li><li>• Quantitative protein detection</li><li>• Establishes normal range</li><li>• The best products for confirmation of antibody array data</li></ul>
Components:	<ul style="list-style-type: none"><li>• Pre-Coated 96-well Strip Microplate</li><li>• Wash Buffer</li></ul>

## Product Details

---

- Standard Peptide
- Assay Diluent(s)
- Biotinylated Peptide
- HRP-Streptavidin
- TMB One-Step Substrate
- Stop Solution
- Assay Diagram
- Positive Control Sample
- Capture Antibody
- User Manual

---

### Material not included:

- Distilled or deionized water
- Precision pipettes to deliver 2 µL to 1 mL volumes
- Adjustable 1-25 mL pipettes for reagent preparation
- 100 mL and 1 liter graduated cylinders
- Tubes to prepare standard and sample dilutions
- Orbital shaker
- Aluminum foil
- Saran Wrap
- Absorbent paper
- Microplate reader capable of measuring absorbance at 450nm
- SigmaPlot software (or other software that can perform four-parameter logistic regression models)

## Target Details

---

Target:	UBL5
Alternative Name:	Ubiquitin-like protein 5 ( <a href="#">UBL5 Products</a> )
Gene ID:	500954
UniProt:	<a href="#">A9UMW0</a>

## Application Details

---

Application Notes:	Optimal working dilution should be determined by the investigator.
Protocol:	<ol style="list-style-type: none"><li>1. Prepare all reagents, samples and standards as instructed.</li><li>2. Add 100 µL detection antibody to each well.</li><li>3. Incubate 1.5 h at RT or O/N at 4 °C.</li><li>4. Add 100 µL standard or sample to each well.</li><li>5. Incubate 2.5 h at RT.</li><li>6. Add 100 µL prepared streptavidin solution.</li></ol>

## Application Details

7. Incubate 45 min at RT.
8. Add 100  $\mu$ L TMB One-Step Substrate Reagent to each well.
9. Incubate 30 min at RT.
10. Add 50  $\mu$ L Stop Solution to each well.
11. Read plate at 450 nm immediately.

Reagent Preparation: Recommended Dilution for serum and plasma samples Human: 2x / Mouse: 2x / Rat: 2x

Restrictions: For Research Use only

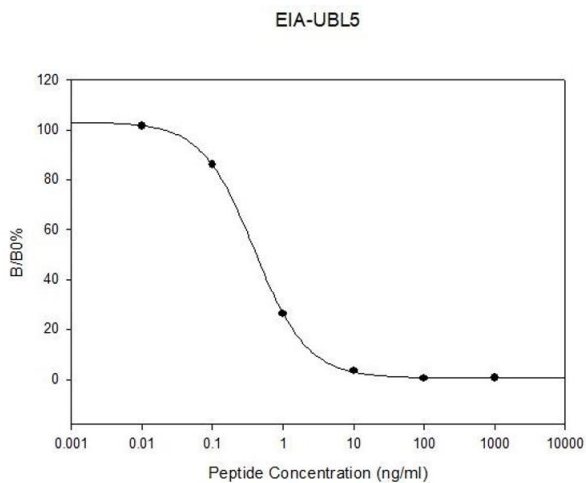
## Handling

Storage: -20 °C

Storage Comment: Standard, biotinylated peptide, and positive control should be stored at -20°C after arrival. Avoid multiple freeze-thaws. The remaining kit components may be stored at 4°C. Opened microplate wells and antibody (Item N) may be stored for up to 1 month at 2° to 8°C. Return unused wells to the pouch containing desiccant pack and reseal along entire edge.

Expiry Date: 6 months

## Images



### ELISA

**Image 1.** Standard Curve