

Datasheet for ABIN673071  
**anti-ECM1 antibody (AA 488-567)****3** Images**1** Publication[Go to Product page](#)

## Overview

Quantity:	100 µL
Target:	ECM1
Binding Specificity:	AA 488-567
Reactivity:	Human, Mouse
Host:	Rabbit
Clonality:	Polyclonal
Conjugate:	This ECM1 antibody is un-conjugated
Application:	Western Blotting (WB), ELISA, Immunohistochemistry (Paraffin-embedded Sections) (IHC (p)), Flow Cytometry (FACS), Immunohistochemistry (Frozen Sections) (IHC (fro)), Immunofluorescence (Cultured Cells) (IF (cc)), Immunofluorescence (Paraffin-embedded Sections) (IF (p))

## Product Details

Immunogen:	KLH conjugated synthetic peptide derived from human ECM1
Isotype:	IgG
Cross-Reactivity:	Human, Mouse
Predicted Reactivity:	Rat,Dog,Cow
Purification:	Purified by Protein A.

## Target Details

Target:	ECM1
---------	------

## Target Details

Alternative Name:	ECM1 ( <a href="#">ECM1 Products</a> )
Background:	Synonyms: p85, A1663821, Extracellular matrix protein 1, Secretory component p85, Ecm1 Background: Involved in endochondral bone formation as negative regulator of bone mineralization. Stimulates the proliferation of endothelial cells and promotes angiogenesis. Inhibits MMP9 proteolytic activity (By similarity).
Gene ID:	13601
UniProt:	<a href="#">Q16610</a>

## Application Details

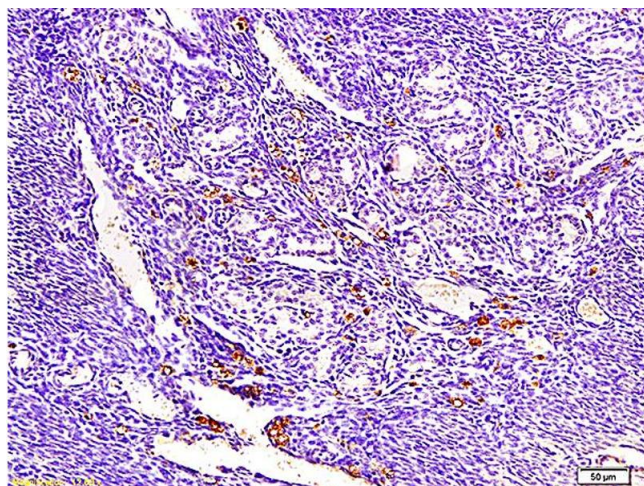
Application Notes:	WB 1:300-5000 ELISA 1:500-1000 FCM 1:20-100 IHC-P 1:200-400 IHC-F 1:100-500 IF(IHC-P) 1:50-200 IF(IHC-F) 1:50-200 IF(ICC) 1:50-200
Restrictions:	For Research Use only

## Handling

Format:	Liquid
Concentration:	1 µg/µL
Buffer:	0.01M TBS( pH 7.4) with 1 % BSA, 0.02 % Proclin300 and 50 % Glycerol.
Preservative:	ProClin
Precaution of Use:	This product contains ProClin: a POISONOUS AND HAZARDOUS SUBSTANCE, which should be handled by trained staff only.
Storage:	4 °C,-20 °C
Storage Comment:	Shipped at 4°C. Store at -20°C for one year. Avoid repeated freeze/thaw cycles.
Expiry Date:	12 months

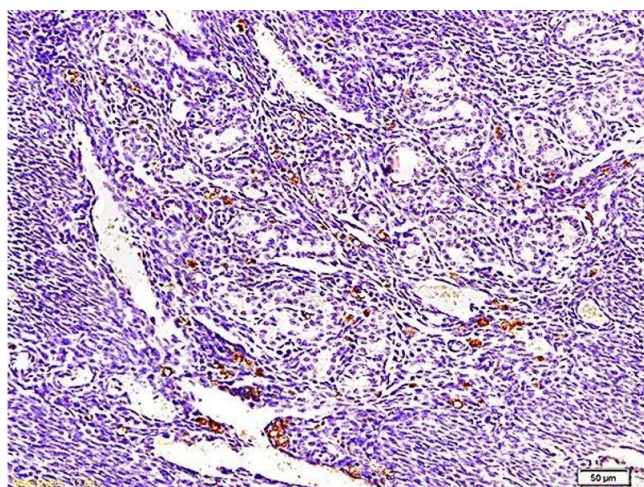
Product cited in: Gao, Zhang, Ding, Chen, Hu, Jiang, Li, Chen, Wang, Ye, Zhu: "Common expression of stemness molecular markers and early cardiac transcription factors in human Wharton's jelly-derived mesenchymal stem cells and embryonic stem cells." in: **Cell transplantation**, Vol. 22, Issue 10, pp. 1883-900, (2014) ([PubMed](#)).

## Images



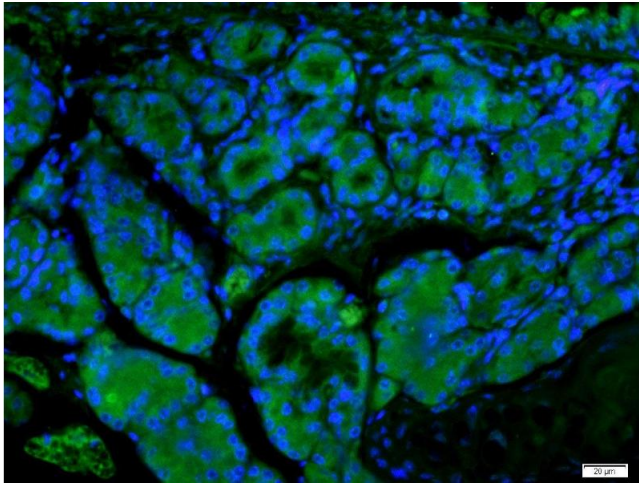
### Immunohistochemistry

**Image 1.** Formalin-fixed and paraffin embedded mouse endometrium tissue labeled with Anti-ECM1 Polyclonal Antibody, Unconjugated (ABIN673071) at 1:300, followed by conjugation to the secondary antibody and DAB staining



### Immunohistochemistry (Paraffin-embedded Sections)

**Image 2.** Formalin-fixed and paraffin embedded mouse endometrium tissue labeled with Anti-ECM1 Polyclonal Antibody, Unconjugated at 1:300, followed by conjugation to the secondary antibody and DAB staining



#### Immunofluorescence (Paraffin-embedded Sections)

**Image 3.** Paraformaldehyde-fixed, paraffin embedded Mouse esophagus, Antigen retrieval by boiling in sodium citrate buffer (pH6) for 15min, Block endogenous peroxidase by 3% hydrogen peroxide for 20 minutes, Blocking buffer (normal goat serum) at 37°C for 30min, Antibody incubation with ECM1 Polyclonal Antibody, Unconjugated at 1:400 overnight at 4°C, followed by a FITC conjugated secondary antibody for 90minutes at 37°C and DAPI for nuclei staining.