

Datasheet for ABIN6731038

**Recombinant anti-RAD21 antibody (N-Term)****2** Images[Go to Product page](#)

## Overview

Quantity:	100 µg
Target:	RAD21
Binding Specificity:	N-Term
Reactivity:	Human, Mouse
Host:	Mouse
Antibody Type:	Recombinant Antibody
Clonality:	Monoclonal
Conjugate:	This RAD21 antibody is un-conjugated
Application:	Western Blotting (WB), Immunofluorescence (IF)

## Product Details

Brand:	AbFlex®
Immunogen:	This antibody was raised against recombinant protein corresponding to the N-terminal half of mouse Rad21.
Isotype:	IgG2a
Purification:	Protein A Chromatography

## Target Details

Target:	RAD21
Alternative Name:	Rad21 ( <a href="#">RAD21 Products</a> )

## Target Details

Molecular Weight: 100 kDa

Pathways: [Positive Regulation of Endopeptidase Activity](#)

## Application Details

Application Notes:

### Validated Applications:

**IF:** 0.25 - 1 µg/ml

**WB:** 0.5- 2 µg/mL

**Comment:** AbFlex® antibodies are recombinant antibodies (rAbs) that have been generated using defined DNA sequences to produce highly specific, reproducible antibodies. Each AbFlex antibody contains a 6XHis tag, an avidin tag sequence for enzymatic biotin conjugation using the biotin ligase, BirA, and a sortase recognition motif (LPXTG) to attach a variety of labels directly to the antibody including fluorophores, enzymatic substrates (HRP, AP), peptides, drugs as well as solid supports. AbFlex Rad21 antibody was expressed as full-length IgG with mouse immunoglobulin heavy and light chains (IgG2a isotype) in mammalian 293 cells

**Restrictions:** For Research Use only

## Handling

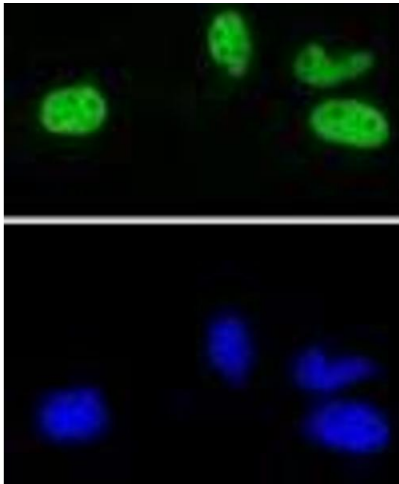
**Format:** Liquid

**Buffer:** Purified IgG in 140 mM Hepes, pH 7.5, 70 mM NaCl, 32 mM NaOAc, 0.035 % sodium azide, 30 % glycerol.

**Preservative:** Sodium azide

**Precaution of Use:** This product contains Sodium azide: a POISONOUS AND HAZARDOUS SUBSTANCE which should be handled by trained staff only.

**Storage:** -20 °C



Immunofluorescence

**Image 1.** Rad21 antibody (rAb) tested by Immunofluorescence. HeLa cells stained with 0.5 µg /mL of Rad21 antibody (rAb) (Top Panel) or DAPI (Lower Panel) followed by anti-mouse IgG-488.



Western Blotting

**Image 2.** Rad21 antibody (rAb) tested by Western blot. 20 µg of HeLa cell nuclear extract was run on SDS-PAGE and probed with Rad21 antibody at 1 µg/ml.