



[Go to Product page](#)

Datasheet for ABIN6731039

## Recombinant anti-KDM4B antibody

### 2 Images

#### Overview

Quantity:	100 µg
Target:	KDM4B
Reactivity:	Human
Host:	Mouse
Antibody Type:	Recombinant Antibody
Clonality:	Monoclonal
Conjugate:	This KDM4B antibody is un-conjugated
Application:	Western Blotting (WB), Immunoprecipitation (IP)

#### Product Details

Brand:	AbFlex®
Immunogen:	This antibody was raised against full-length recombinant human lysine-specific demethylase 4B (KDM4B) protein.
Isotype:	IgG2a
Purification:	Protein A Chromatography

#### Target Details

Target:	KDM4B
Alternative Name:	JMJD2B / KDM4B ( <a href="#">KDM4B Products</a> )
Molecular Weight:	130 kDa

## Target Details

---

Pathways: [Warburg Effect](#)

## Application Details

---

Application Notes:

**Validated Applications:**

**IP:** 4 µg per IP

**WB\*:** 0.05 - 2 µg/ml

\*Note: many chromatin-bound proteins are not soluble in a low salt nuclear extract and fractionate to the pellet; therefore, we recommend a High Salt & Sonication Protocol when preparing nuclear extracts for Western Blot.

Comment: AbFlex® antibodies are recombinant antibodies (rAbs) that have been generated using defined DNA sequences to produce highly specific, reproducible antibodies. Each AbFlex antibody contains a 6XHis tag, an avidin tag sequence for enzymatic biotin conjugation using the biotin ligase, BirA, and a sortase recognition motif (LPXTG) to attach a variety of labels directly to the antibody including fluorophores, enzymatic substrates (HRP, AP), peptides, drugs as well as solid supports. AbFlex JMJD2B / KDM4B antibody was expressed in 293 cells and contains mouse immunoglobulin heavy and light chains.

Restrictions: For Research Use only

## Handling

---

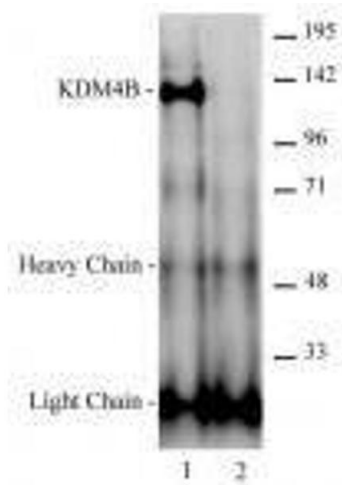
Format: Liquid

Buffer: Purified IgG in 140 mM Hepes, pH 7.5, 70 mM NaCl, 32 mM NaOAc, 0.035 % sodium azide, 30 % glycerol.

Preservative: Sodium azide

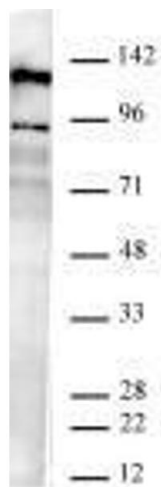
Precaution of Use: This product contains Sodium azide: a POISONOUS AND HAZARDOUS SUBSTANCE which should be handled by trained staff only.

Storage: -20 °C



### Immunoprecipitation

**Image 1.** JMJD2B / KDM4B antibody (rAb) tested antibody tested by immunoprecipitation. 4  $\mu$ g of JMJD2B / KDM4B antibody (Lane 1) or an unrelated mouse IgG (Lane 2) was used to immunoprecipitate JMJD2B / KDM4B from 500  $\mu$ g of K562 nuclear extract. The immunoprecipitated protein was detected by Western blotting using a JMJD2B / KDM4B antibody, ABIN2668726 at a dilution of 1:500.



### Western Blotting

**Image 2.** JMJD2B / KDM4B antibody (rAb) tested by Western blot. 20  $\mu$ g of K562 nuclear extract was run on SDS-PAGE and probed with JMJD2B / KDM4B antibody at 2  $\mu$ g/ml.