

Datasheet for ABIN6731041

Recombinant anti-PIWIL2 antibody[Go to Product page](#)**1** Image

Overview

Quantity:	100 µg
Target:	PIWIL2
Reactivity:	Mouse
Host:	Mouse
Antibody Type:	Recombinant Antibody
Clonality:	Monoclonal
Application:	Western Blotting (WB)

Product Details

Brand:	AbFlex®
Immunogen:	This antibody was raised against full length mouse MILI / PIWIL2 (Miwi like / piwi-like 2) recombinant protein.
Isotype:	IgG2a
Purification:	Protein A Chromatography

Target Details

Target:	PIWIL2
Alternative Name:	Mili / PiwiL2 (PIWIL2 Products)
Molecular Weight:	110 kDa
Pathways:	Stem Cell Maintenance

Application Details

Application Notes:

Validated Applications:

WB: 0.2 - 2 µg/mL

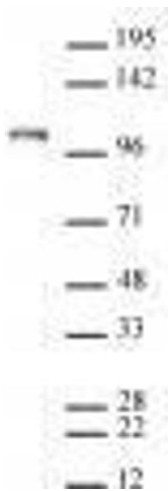
Comment: AbFlex® antibodies are recombinant antibodies (rAbs) that have been generated using defined DNA sequences to produce highly specific, reproducible antibodies. Each AbFlex antibody contains a 6XHis tag, an avidin tag sequence for enzymatic biotin conjugation using the biotin ligase, BirA, and a sortase recognition motif (LPXTG) to attach a variety of labels directly to the antibody including fluorophores, enzymatic substrates (HRP, AP), peptides, drugs as well as solid supports. AbFlex Mili / PiwiL2 antibody was expressed as full-length IgG with mouse immunoglobulin heavy and light chains (IgG2a isotype) in mammalian 293 cells.

Restrictions: For Research Use only

Handling

Format:	Liquid
Buffer:	Purified IgG in 140 mM Hepes, pH 7.5, 70 mM NaCl, 32 mM NaOAc, 0.035 % sodium azide, 30 % glycerol.
Preservative:	Sodium azide
Precaution of Use:	This product contains Sodium azide: a POISONOUS AND HAZARDOUS SUBSTANCE which should be handled by trained staff only.
Storage:	-20 °C

Images



Western Blotting

Image 1. Mili / PiwiL2 antibody (rAb) tested by Western blot. 20 µg of mouse testis tissue extract was run on SDS-PAGE and probed with Mili / PiwiL2 antibody at 2 µg/ml.