

Datasheet for ABIN6731042

Recombinant anti-SMARCA1 antibody[Go to Product page](#)**1** Image

Overview

Quantity:	100 µg
Target:	SMARCA1
Reactivity:	Human
Host:	Mouse
Antibody Type:	Recombinant Antibody
Clonality:	Monoclonal
Conjugate:	This SMARCA1 antibody is un-conjugated
Application:	Western Blotting (WB)

Product Details

Brand:	AbFlex®
Immunogen:	This antibody was raised against a recombinant protein encompassing amino acids 571 to 772 of human SNF2L (sucrose nonfermenting 2-like protein 1).
Isotype:	IgG2a
Purification:	Protein A Chromatography

Target Details

Target:	SMARCA1
Alternative Name:	SMARCA1 / SNF2L1 (SMARCA1 Products)
Molecular Weight:	130 kDa

Target Details

Pathways: [Chromatin Binding](#)

Application Details

Application Notes:

Validated Applications:

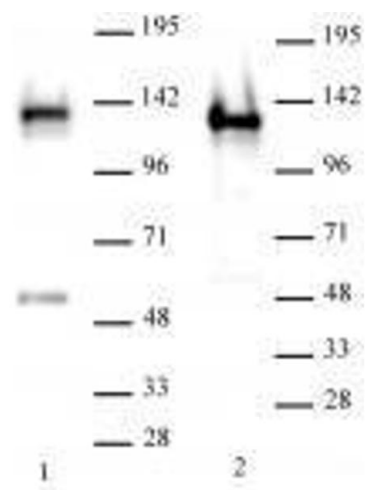
WB: 0.5 - 2 µg/mL

For optimal results, we recommend the addition of 0.1% Tween 20 to all Blotto solutions to reduce background. Individual optimization may be required.

Comment:	AbFlex® antibodies are recombinant antibodies (rAbs) that have been generated using defined DNA sequences to produce highly specific, reproducible antibodies. Each AbFlex antibody contains a 6xHis-Tag, an avidin tag sequence for enzymatic biotin conjugation using the biotin ligase, BirA, and a sortase recognition motif (LPXTG) to attach a variety of labels directly to the antibody including fluorophores, enzymatic substrates (HRP, AP), peptides, drugs as well as solid supports. AbFlex® SMARCA1/SNF2L1 antibody was expressed as full-length IgG with mouse immunoglobulin heavy and light chains (IgG2a isotype) in mammalian 293 cells.
Restrictions:	For Research Use only

Handling

Format:	Liquid
Buffer:	Purified IgG in 140 mM Hepes, pH 7.5, 70 mM NaCl, 32 mM NaOAc, 0.035 % sodium azide, 30 % glycerol.
Preservative:	Sodium azide
Precaution of Use:	This product contains Sodium azide: a POISONOUS AND HAZARDOUS SUBSTANCE which should be handled by trained staff only.
Storage:	-20 °C



Western Blotting

Image 1. SMARCA1 / SNF2L1 antibody (rAb) tested by Western blot. 30 µg of HeLa cell nuclear extract (Lane 1) or 20 µg of U87 glioblastoma cell nuclear extract (Lane 2) was run on SDS-PAGE and probed with ® SMARCA1 / SNF2L1 antibody at 2 µg/ml.