

Datasheet for ABIN6731068
anti-CD3 antibody (iFluor™700)



[Go to Product page](#)

1 Image

Overview

Quantity:	25 tests
Target:	CD3
Reactivity:	Human
Host:	Mouse
Clonality:	Monoclonal
Conjugate:	This CD3 antibody is conjugated to iFluor™700
Application:	Flow Cytometry (FACS)

Product Details

Purpose:	CD3 iFluor™ 700 Antibody
Immunogen:	Human peripheral blood lymphocytes
Clone:	OKT3
Isotype:	IgG2a, kappa
Characteristics:	CD3ε is a 20kD peptide chain, which together with CD3λ, CD3δ, and CD3ζ, and a T cell receptor (α/β or γ/δ) form the CD3/T-cell receptor complex. It is a specific marker for T lymphocytes, NK T cells, and some thymocytes. Crosslinking of TCR initiates an intracellular signaling cascade resulting in cellular activation and proliferation. The OKT3 antibody shows potent immunosuppressive properties in vivo and has been proved effective in the treatment of renal, heart, and liver allograft rejection.
Purification:	Purified
Purity:	>95 %

Product Details

Grade: GMP Grade

Target Details

Target: CD3

Alternative Name: CD3 ([CD3 Products](#))

Gene ID: 916

NCBI Accession: [NM_000733](#)

UniProt: [P07766](#)

Pathways: [TCR Signaling, Ubiquitin Proteasome Pathway](#)

Application Details

Application Notes: Optimal working dilution should be determined by the investigator.

Restrictions: For Research Use only

Handling

Format: Liquid

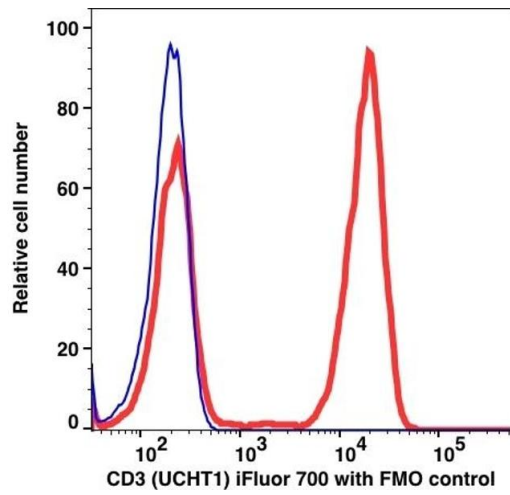
Buffer: PBS pH 7.2, 0.2 % (w/v) BSA, 0.09 % (w/v) sodium azide

Preservative: Sodium azide

Precaution of Use: This product contains Sodium azide: a POISONOUS AND HAZARDOUS SUBSTANCE which should be handled by trained staff only.

Storage: 4 °C

Storage Comment: 2-8°C, Conjugated antibodies should never be frozen.



Flow Cytometry

Image 1.