

Datasheet for ABIN6731127

anti-kappa Light Chain antibody (PE-Cy7)**1** Image[Go to Product page](#)

Overview

Quantity:	100 tests
Target:	kappa Light Chain
Reactivity:	Human
Host:	Mouse
Clonality:	Monoclonal
Conjugate:	This kappa Light Chain antibody is conjugated to PE-Cy7
Application:	Flow Cytometry (FACS)

Product Details

Immunogen:	Human kappa myeloma protein
Clone:	TB 28-2
Isotype:	IgG1 kappa
Characteristics:	The clone TB28-2 specifically recognizes both soluble and surface expressing kappa light chains of human immunoglobulins. Immunoglobulins bearing kappa light chains are present on approximately 60 % of normal B lymphocytes and all Igk+ leukemic cells. In serum, anti-kappa reacts with immunoglobulins bearing kappa light chains as well as free kappa light chains.
Purification:	Purified
Purity:	>95 %
Grade:	GMP Grade

Target Details

Target:	kappa Light Chain
Alternative Name:	Ig Kappa Light Chain (kappa Light Chain Products)
Background:	The clone TB28-2 specifically recognizes both soluble and surface expressing kappa light chains of human immunoglobulins. Immunoglobulins bearing kappa light chains are present on approximately 60 % of normal B lymphocytes and all Igk+ leukemic cells. In serum, anti-kappa reacts with immunoglobulins bearing kappa light chains as well as free kappa light chains.
Gene ID:	50802
UniProt:	P01834

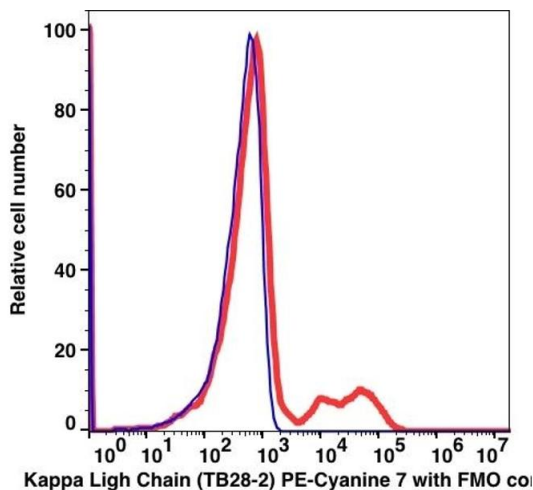
Application Details

Restrictions:	For Research Use only
---------------	-----------------------

Handling

Format:	Liquid
Buffer:	PBS pH 7.2, 0.2 % (w/v) BSA, 0.09 % (w/v) sodium azide
Preservative:	Sodium azide
Precaution of Use:	This product contains Sodium azide: a POISONOUS AND HAZARDOUS SUBSTANCE which should be handled by trained staff only.
Storage:	4 °C

Images



Flow Cytometry

Image 1.