

Datasheet for ABIN673269
anti-PAX1 antibody (AA 151-250)

3 Images

[Go to Product page](#)

Overview

Quantity:	100 µL
Target:	PAX1
Binding Specificity:	AA 151-250
Reactivity:	Human, Mouse
Host:	Rabbit
Clonality:	Polyclonal
Conjugate:	This PAX1 antibody is un-conjugated
Application:	ELISA, Immunohistochemistry (Paraffin-embedded Sections) (IHC (p)), Immunohistochemistry (Frozen Sections) (IHC (fro)), Immunocytochemistry (ICC)

Product Details

Immunogen:	KLH conjugated synthetic peptide derived from human PAX1
Isotype:	IgG
Specificity:	Contains 1 paired domain.
Cross-Reactivity:	Human, Mouse
Predicted Reactivity:	Rat,Dog,Cow,Pig,Horse,Chicken,Rabbit
Purification:	Purified by Protein A.

Target Details

Target:	PAX1
---------	------

Target Details

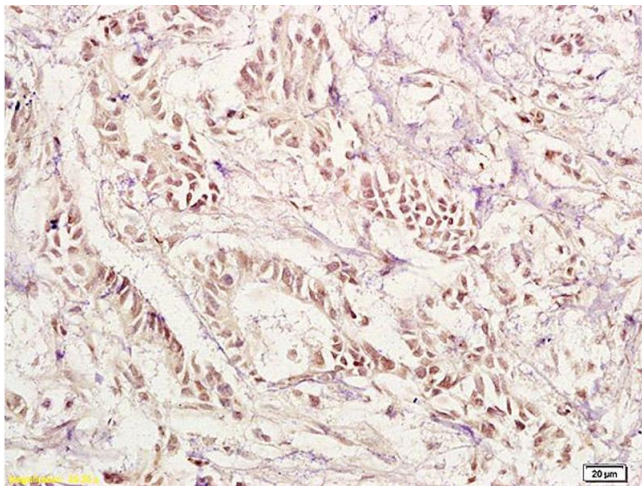
Alternative Name:	PAX1 (PAX1 Products)
Background:	Synonyms: OFC2, HUP48, Paired box protein Pax-1, PAX1 Background: This protein is a transcriptional activator. It may play a role in the formation of segmented structures of the embryo. May play an important role in the normal development of the vertebral column (By similarity).
Gene ID:	5075
UniProt:	P15863

Application Details

Application Notes:	ELISA 1:500-1000 IHC-P 1:200-400 IHC-F 1:100-500 ICC 1:100-500
Restrictions:	For Research Use only

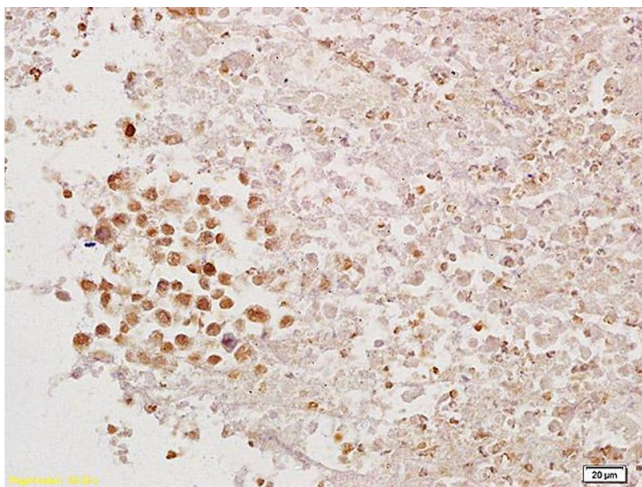
Handling

Format:	Liquid
Concentration:	1 µg/µL
Buffer:	0.01M TBS(pH 7.4) with 1 % BSA, 0.02 % Proclin300 and 50 % Glycerol.
Preservative:	ProClin
Precaution of Use:	This product contains ProClin: a POISONOUS AND HAZARDOUS SUBSTANCE, which should be handled by trained staff only.
Storage:	4 °C,-20 °C
Storage Comment:	Shipped at 4°C. Store at -20°C for one year. Avoid repeated freeze/thaw cycles.
Expiry Date:	12 months



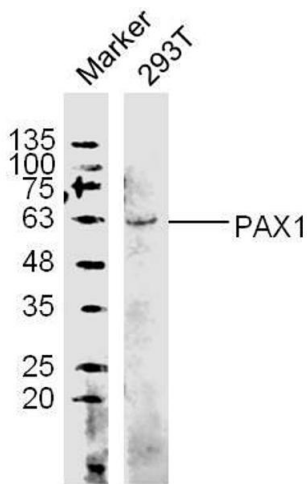
Immunohistochemistry

Image 1. Formalin-fixed and paraffin embedded human gastric carcinoma labeled with Anti-PAX1 Polyclonal Antibody, Unconjugated (ABIN673269) at 1:200 followed by conjugation to the secondary antibody and DAB staining.



Immunohistochemistry

Image 2. Formalin-fixed and paraffin embedded mouse tumor tissue labeled with Anti-PAX1 Polyclonal Antibody, Unconjugated (ABIN673269) at 1:200 followed by conjugation to the secondary antibody and DAB staining.



Western Blotting

Image 3. (Human Cell line) 293T lysates probed with PAX1 Polyclonal Antibody, unconjugated at 1:300 overnight at 4°C followed by a conjugated secondary antibody at 1:10000 for 60 minutes at 37°C.