

Datasheet for ABIN673539
anti-XRCC1 antibody (AA 1-120)

2 Images

[Go to Product page](#)

Overview

| | |
|----------------------|--|
| Quantity: | 100 µL |
| Target: | XRCC1 |
| Binding Specificity: | AA 1-120 |
| Reactivity: | Human |
| Host: | Rabbit |
| Clonality: | Polyclonal |
| Conjugate: | This XRCC1 antibody is un-conjugated |
| Application: | Western Blotting (WB), ELISA, Immunohistochemistry (Paraffin-embedded Sections) (IHC (p)), Immunofluorescence (Paraffin-embedded Sections) (IF (p)), Immunofluorescence (Cultured Cells) (IF (cc)), Immunohistochemistry (Frozen Sections) (IHC (fro)) |

Product Details

| | |
|-----------------------|---|
| Immunogen: | KLH conjugated synthetic peptide derived from human XRCC1 |
| Isotype: | IgG |
| Cross-Reactivity: | Human |
| Predicted Reactivity: | Mouse,Rat |
| Purification: | Purified by Protein A. |

Target Details

| | |
|---------|-------|
| Target: | XRCC1 |
|---------|-------|

Target Details

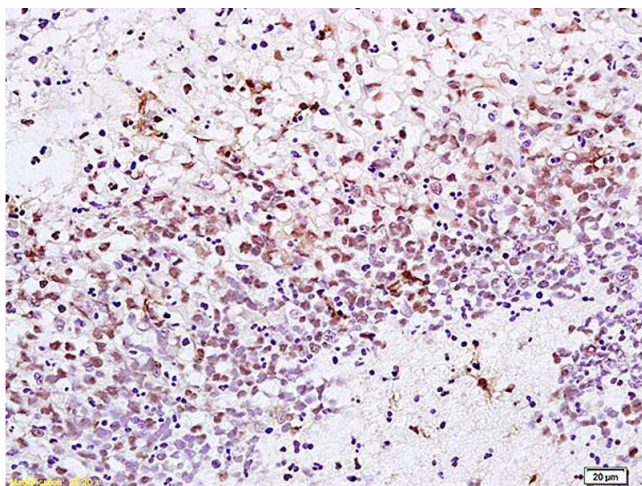
| | |
|-------------------|---|
| Alternative Name: | XRCC1 (XRCC1 Products) |
| Background: | Synonyms: RCC, DNA repair protein XRCC1, X-ray repair cross-complementing protein 1, XRCC1 Background: Corrects defective DNA strand-break repair and sister chromatid exchange following treatment with ionizing radiation and alkylating agents. |
| Gene ID: | 7515 |
| UniProt: | P18887 |
| Pathways: | DNA Damage Repair |

Application Details

| | |
|--------------------|---|
| Application Notes: | WB 1:300-5000 ELISA 1:500-1000 IHC-P 1:200-400 IHC-F 1:100-500 IF(IHC-P) 1:50-200 IF(IHC-F) 1:50-200 IF(ICC) 1:50-200 |
| Restrictions: | For Research Use only |

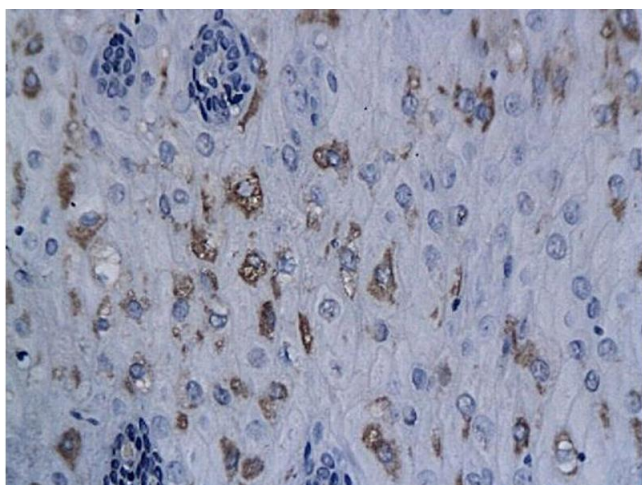
Handling

| | |
|--------------------|--|
| Format: | Liquid |
| Concentration: | 1 µg/µL |
| Buffer: | 0.01M TBS(pH 7.4) with 1 % BSA, 0.02 % Proclin300 and 50 % Glycerol. |
| Preservative: | ProClin |
| Precaution of Use: | This product contains ProClin: a POISONOUS AND HAZARDOUS SUBSTANCE, which should be handled by trained staff only. |
| Storage: | 4 °C,-20 °C |
| Storage Comment: | Shipped at 4°C. Store at -20°C for one year. Avoid repeated freeze/thaw cycles. |
| Expiry Date: | 12 months |



Immunohistochemistry

Image 1. Formalin-fixed and paraffin embedded human gastric carcinoma labeled with Anti-XRCC1 Polyclonal Antibody, Unconjugated (ABIN673539) at 1:200 followed by conjugation to the secondary antibody and DAB staining.



Immunohistochemistry

Image 2. Formalin-fixed and paraffin embedded human esophageal cancer labeled with Anti-XRCC1 Polyclonal Antibody, Unconjugated (ABIN673539) followed by conjugation to the secondary antibody and DAB staining