

Datasheet for ABIN6735460  
**anti-CACNB4 antibody (AA 361-410)**



[Go to Product page](#)

1 Image

## Overview

Quantity:	100 µL
Target:	CACNB4
Binding Specificity:	AA 361-410
Reactivity:	Human, Mouse, Rat, Cow, Rabbit, Horse, Zebrafish (Danio rerio), Guinea Pig, Pig, Monkey, Bat
Host:	Rabbit
Clonality:	Polyclonal
Conjugate:	This CACNB4 antibody is un-conjugated
Application:	Western Blotting (WB)

## Product Details

Immunogen:	Synthetic peptide located between aa361-410 of human CACNB4 (O00305-2, NP_001005747). Percent identity by BLAST analysis: Human, Chimpanzee, Gorilla, Gibbon, Monkey, Galago, Marmoset, Mouse, Rat, Elephant, Bovine, Bat, Rabbit, Horse, Pig, Guinea pig, Platypus, Lizard, Zebrafish (100%), Opossum, Turkey, Chicken (92%), Xenopus (85%).  Type of Immunogen: Synthetic peptide
Isotype:	IgG
Specificity:	Human CACNB4
Predicted Reactivity:	Percent identity by BLAST analysis: Human, Mouse, Rat, Bovine, Rabbit, Horse, Pig, Guinea pig, Zebrafish (100%) Chicken (92%).
Purification:	Immunoaffinity purified

## Target Details

---

Target:	CACNB4
Alternative Name:	CACNB4 ( <a href="#">CACNB4 Products</a> )
Background:	Name/Gene ID: CACNB4 Subfamily: Calcium channel - beta subunit Family: Ion Channel  Synonyms: CACNB4, CAB4, Calcium channel beta 4, Cavbeta4, Cchb4, EA5, EJM6, EJM, CACNLB4, EIG9, EJM4
Gene ID:	785
NCBI Accession:	<a href="#">NP_001005747</a>
UniProt:	<a href="#">O00305</a>
Pathways:	<a href="#">cAMP Metabolic Process, Skeletal Muscle Fiber Development</a>

## Application Details

---

Application Notes:	Approved: WB (0.2 - 1 µg/mL)
Comment:	Target Species of Antibody: Human
Restrictions:	For Research Use only

## Handling

---

Format:	Lyophilized
Reconstitution:	After adding water, will consist of PBS buffer with 2 % sucrose
Concentration:	Lot specific
Buffer:	Lyophilized from PBS with 2 % sucrose
Handling Advice:	Avoid repeat freeze-thaw cycles.
Storage:	4 °C,-20 °C
Storage Comment:	Long term: -20°C, the use of 50% glycerol is recommended if storing aliquots in -20°C for long term use (up to 1 year) Short term (less than 1 week): 4°C. Avoid freeze-thaw cycles.

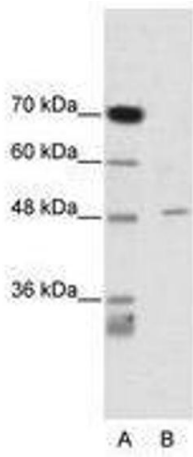


Image 1.