

Datasheet for ABIN6735463  
**anti-CLCNKB antibody (N-Term)**



[Go to Product page](#)

1 Image

## Overview

Quantity:	100 µL
Target:	CLCNKB
Binding Specificity:	N-Term
Reactivity:	Human, Dog
Host:	Rabbit
Clonality:	Polyclonal
Conjugate:	This CLCNKB antibody is un-conjugated
Application:	Western Blotting (WB)

## Product Details

Immunogen:	Synthetic peptide from N-Terminus of human CLCNKB (Q8WW53). Percent identity by BLAST analysis: Human, Chimpanzee (100%), Gorilla, Orangutan, Gibbon, Monkey, Mouse, Rat, Bovine, Rabbit, Guinea pig (92%), Marmoset, Dog, Opossum (85%).  Type of Immunogen: Synthetic peptide
Isotype:	IgG
Specificity:	Human CLCNKB
Predicted Reactivity:	Percent identity by BLAST analysis: Human (100%) Dog (85%).
Purification:	Immunoaffinity purified

## Target Details

---

Target:	CLCNKB
Alternative Name:	CLCNKB ( <a href="#">CLCNKB Products</a> )
Background:	Name/Gene ID: CLCNKB Subfamily: Chloride channel - CLCK Family: Ion Channel  Synonyms: CLCNKB, Bartter syndrome Type 3, Chloride channel, kidney, B, Chloride channel Kb, CIC-Kb, CIC-K2, CLCKB, HCIC-Kb
Gene ID:	1188
UniProt:	<a href="#">P51801</a>

## Application Details

---

Application Notes:	Approved: WB (0.2 - 1 µg/mL)
Comment:	Target Species of Antibody: Human
Restrictions:	For Research Use only

## Handling

---

Format:	Lyophilized
Reconstitution:	After adding water, will consist of PBS buffer with 2 % sucrose
Concentration:	Lot specific
Buffer:	Lyophilized from PBS with 2 % sucrose
Handling Advice:	Avoid repeat freeze-thaw cycles.
Storage:	4 °C,-20 °C
Storage Comment:	Long term: -20°C, the use of 50% glycerol is recommended if storing aliquots in -20°C for long term use (up to 1 year) Short term (less than 1 week): 4°C. Avoid freeze-thaw cycles.

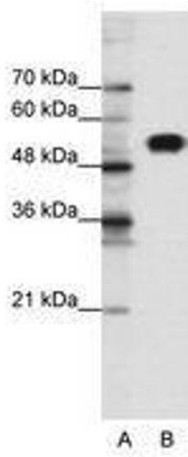


Image 1.