

Datasheet for ABIN6735766

**anti-Metabotropic Glutamate Receptor 6 antibody (AA 700-749)**[Go to Product page](#)**2** Images

## Overview

Quantity:	100 µL
Target:	Metabotropic Glutamate Receptor 6 (GRM6)
Binding Specificity:	AA 700-749
Reactivity:	Human, Rat, Mouse, Dog, Rabbit, Cow, Guinea Pig, Horse, Monkey, Bat
Host:	Rabbit
Clonality:	Polyclonal
Conjugate:	This Metabotropic Glutamate Receptor 6 antibody is un-conjugated
Application:	Western Blotting (WB), Immunohistochemistry (IHC), Immunohistochemistry (Paraffin-embedded Sections) (IHC (p))

## Product Details

Brand:	IHC-plus™
Immunogen:	Synthetic peptide located between aa700-749 of human GRM6 (O15303, NP_000834). Percent identity by BLAST analysis: Human, Chimpanzee, Gorilla, Gibbon, Monkey, Galago, Marmoset, Mouse, Rat, Elephant, Panda, Dog, Bovine, Bat, Rabbit, Horse, Guinea pig (100%), Opossum (92%), Baboon, Shrew, Dolphin, Pig, Zebra finch, Armadillo, Platypus, Xenopus (85%).  Type of Immunogen: Synthetic peptide
Specificity:	Human GRM6 / MGLUR6
Predicted Reactivity:	Percent identity by BLAST analysis: Human, Mouse, Rat, Dog, Bovine, Rabbit, Guinea pig (100%).
Purification:	Immunoaffinity purified

## Target Details

---

Target:	Metabotropic Glutamate Receptor 6 (GRM6)
Alternative Name:	GRM6 / MGLUR6 ( <a href="#">GRM6 Products</a> )
Background:	Name/Gene ID: GRM6 Subfamily: Metabotropic glutamate Family: GPCR  Synonyms: GRM6, CSNB1B, GPRC1F, MGLu6, MGLUR6
Gene ID:	2916
NCBI Accession:	<a href="#">NP_000834</a>
UniProt:	<a href="#">O15303</a>

## Application Details

---

Application Notes:	Approved: IHC, IHC-P (5 µg/mL), WB (0.2 - 1 µg/mL)  Usage: Immunohistochemistry: This antibody was validated for use in immunohistochemistry on a panel of 21 formalin-fixed, paraffin-embedded (FFPE) human tissues after heat induced antigen retrieval in pH 6.0 citrate buffer. After incubation with the primary antibody, slides were incubated with biotinylated secondary antibody, followed by alkaline phosphatase-streptavidin and chromogen. The stained slides were evaluated by a pathologist to confirm staining specificity. The optimal working concentration for this antibody was determined to be 5 µg/mL.
Comment:	Target Species of Antibody: Human
Restrictions:	For Research Use only

## Handling

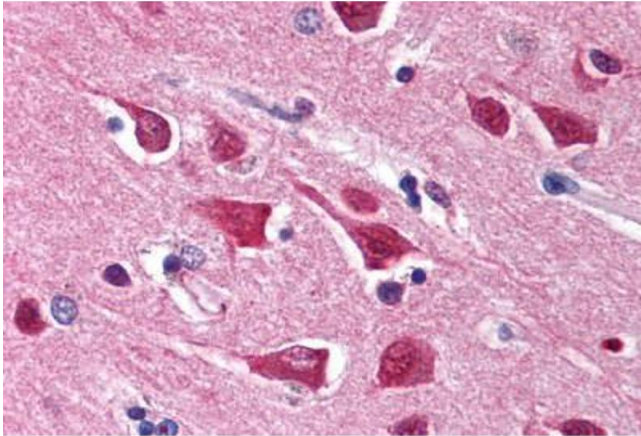
---

Format:	Lyophilized
Reconstitution:	After adding water, will consist of PBS buffer with 2 % sucrose
Concentration:	Lot specific
Buffer:	Lyophilized from PBS with 2 % sucrose
Handling Advice:	Avoid repeat freeze-thaw cycles.
Storage:	4 °C, -20 °C

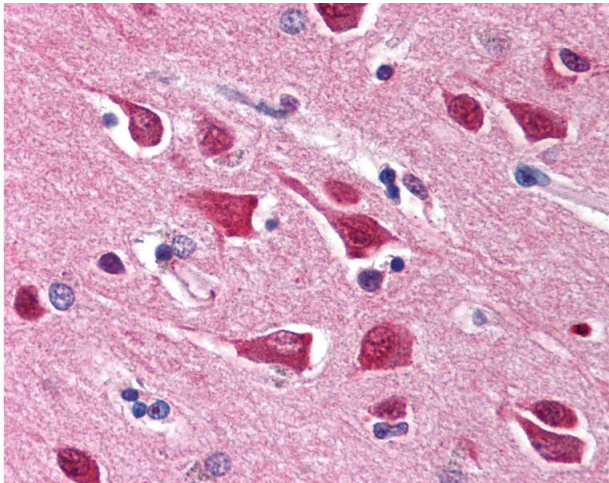
## Handling

Storage Comment: Long term: -20°C, the use of 50% glycerol is recommended if storing aliquots in -20°C for long term use (up to 1 year)  
Short term (less than 1 week): 4°C. Avoid freeze-thaw cycles.

## Images



**Image 1.** Brain, cortex



### Immunohistochemistry

**Image 2.** Anti-GRM6 / MGLUR6 antibody IHC of human brain, cortex. Immunohistochemistry of formalin-fixed, paraffin-embedded tissue after heat-induced antigen retrieval. Antibody concentration 5 ug/ml. This image was taken for the unconjugated form of this pro ...