



[Go to Product page](#)

Datasheet for ABIN6735783
anti-SIRT5 antibody (C-Term)

3 Images

Overview

Quantity:	100 µL
Target:	SIRT5
Binding Specificity:	C-Term
Reactivity:	Human, Goat, Pig, Guinea Pig
Host:	Rabbit
Clonality:	Polyclonal
Conjugate:	This SIRT5 antibody is un-conjugated
Application:	Western Blotting (WB), Immunohistochemistry (IHC), Immunohistochemistry (Paraffin-embedded Sections) (IHC (p))

Product Details

Immunogen:	Synthetic peptide from C-Terminus of human SIRT5 (Q9NXA8, NP_112534). Percent identity by BLAST analysis: Human, Chimpanzee, Gorilla, Orangutan, Gibbon, Monkey, Goat, Guinea pig (100%), Marmoset, Mouse, Rat, Elephant, Panda, Dog, Bovine, Rabbit, Horse, Platypus (92%), Catfish (91%), Zebrafish (90%), Bat, Pig, Chicken, Xenopus (85%), Opossum, Turkey (84%). Type of Immunogen: Synthetic peptide
Isotype:	IgG
Specificity:	Human SIRT5
Predicted Reactivity:	Percent identity by BLAST analysis: Human, Goat, Guinea pig (100%) Mouse, Rat, Dog, Bovine (92%) Zebrafish (90%) Pig, Chicken (85%).

Product Details

Purification: Immunoaffinity purified

Target Details

Target: SIRT5

Alternative Name: SIRT5 / Sirtuin 5 ([SIRT5 Products](#))

Background: Name/Gene ID: SIRT5
Family: ADP-Ribosyltransferase

Synonyms: SIRT5, SIR2L5, Sir2-like 5, SIR2-like protein 5, Sirtuin 5, Sirtuin type 5

Gene ID: 23408

NCBI Accession: [NP_112534](#)

UniProt: [Q9NXA8](#)

Pathways: [SARS-CoV-2 Protein Interactome](#)

Application Details

Application Notes: Approved: IHC, IHC-P, WB (0.2 - 1 µg/mL)

Comment: Target Species of Antibody: Human

Restrictions: For Research Use only

Handling

Format: Lyophilized

Reconstitution: After adding water, will consist of PBS buffer with 2 % sucrose

Concentration: Lot specific

Buffer: Lyophilized from PBS with 2 % sucrose

Handling Advice: Avoid repeat freeze-thaw cycles.

Storage: 4 °C, -20 °C

Storage Comment: Long term: -20°C, the use of 50% glycerol is recommended if storing aliquots in -20°C for long term use (up to 1 year)
Short term (less than 1 week): 4°C. Avoid freeze-thaw cycles.

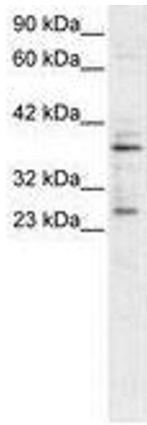


Image 1.

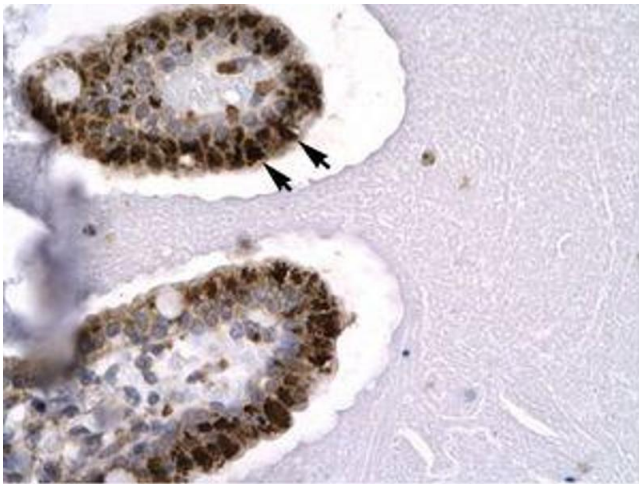


Image 2.

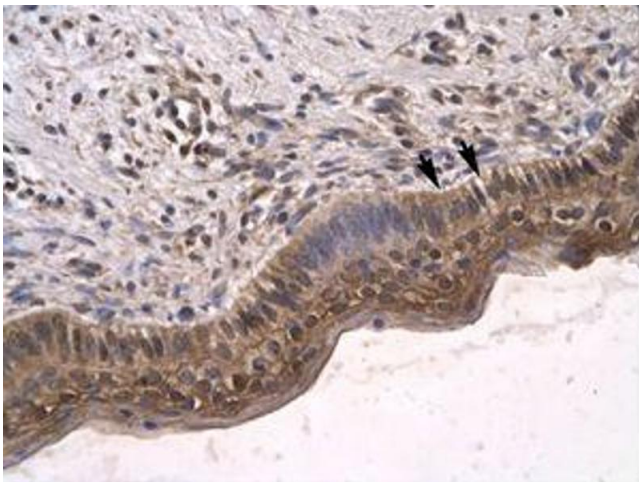


Image 3.