



[Go to Product page](#)

Datasheet for ABIN6735787
anti-Zfp-1 antibody (AA 122-171)

3 Images

Overview

Quantity:	100 µL
Target:	Zfp-1
Binding Specificity:	AA 122-171
Reactivity:	Human, Mouse, Dog
Host:	Rabbit
Clonality:	Polyclonal
Conjugate:	This Zfp-1 antibody is un-conjugated
Application:	Western Blotting (WB), Immunohistochemistry (IHC), Immunohistochemistry (Paraffin-embedded Sections) (IHC (p))

Product Details

Immunogen:	Synthetic peptide located between aa122-171 of human ZFP1 (Q8N9F9, NP_710155). Percent identity by BLAST analysis: Human, Chimpanzee, Gorilla (100%), Orangutan, Gibbon, Bovine (92%), Monkey, Marmoset, Hamster, Panda, Dog (85%), Mouse (78%). Type of Immunogen: Synthetic peptide
Isotype:	IgG
Specificity:	Human ZFP1
Predicted Reactivity:	Percent identity by BLAST analysis: Human (100%) Bovine (92%) Dog (85%).
Purification:	Immunoaffinity purified

Target Details

Target:	Zfp-1
Alternative Name:	ZFP1 (Zfp-1 Products)
Background:	Name/Gene ID: ZFP1 Synonyms: ZFP1, ZFP1 zinc finger protein, Zinc finger protein 1 homolog, Zinc finger protein 475, ZNF475
Gene ID:	162239
NCBI Accession:	NP_710155
UniProt:	Q6P2D0

Application Details

Application Notes:	Approved: IHC, IHC-P, WB (0.2 - 1 µg/mL)
Comment:	Target Species of Antibody: Human
Restrictions:	For Research Use only

Handling

Format:	Lyophilized
Reconstitution:	After adding water, will consist of PBS buffer with 2 % sucrose
Concentration:	Lot specific
Buffer:	Lyophilized from PBS with 2 % sucrose
Handling Advice:	Avoid repeat freeze-thaw cycles.
Storage:	4 °C, -20 °C
Storage Comment:	Long term: -20°C, the use of 50% glycerol is recommended if storing aliquots in -20°C for long term use (up to 1 year) Short term (less than 1 week): 4°C. Avoid freeze-thaw cycles.

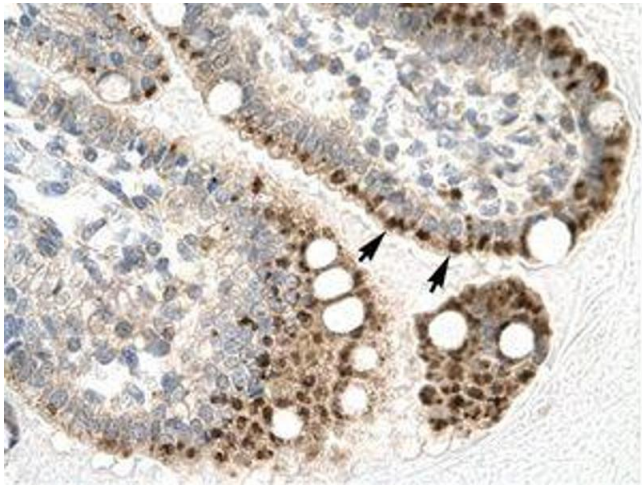


Image 1.

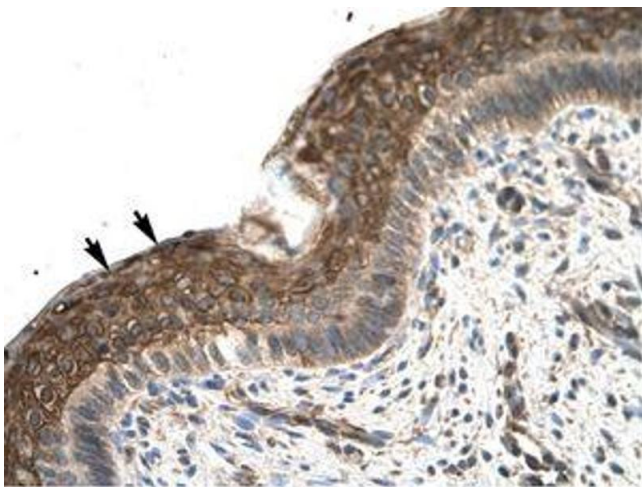


Image 2.

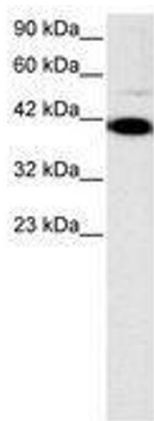


Image 3.