



[Go to Product page](#)

Datasheet for ABIN6735788

anti-AEBP1 antibody (AA 85-134)

3 Images

Overview

Quantity:	100 µL
Target:	AEBP1
Binding Specificity:	AA 85-134
Reactivity:	Human, Guinea Pig, Horse, Rabbit, Bat, Monkey, Pig
Host:	Rabbit
Clonality:	Polyclonal
Conjugate:	This AEBP1 antibody is un-conjugated
Application:	Western Blotting (WB), Immunohistochemistry (IHC), Immunohistochemistry (Paraffin-embedded Sections) (IHC (p))

Product Details

Immunogen:	Synthetic peptide located between aa85-134 of human AEBP1 (Q14113, NP_001120). Percent identity by BLAST analysis: Human, Gorilla, Monkey, Galago, Marmoset, Elephant, Panda, Bat, Rabbit, Horse, Pig, Opossum, Guinea pig (100%), Mouse, Rat, Hamster (92%). Type of Immunogen: Synthetic peptide
Isotype:	IgG
Specificity:	Human AEBP1
Predicted Reactivity:	Percent identity by BLAST analysis: Human, Rabbit, Horse, Pig, Guinea pig (100%) Mouse, Rat (92%).
Purification:	Immunoaffinity purified

Target Details

Target:	AEBP1
Alternative Name:	ACLP / AEBP1 (AEBP1 Products)
Background:	Name/Gene ID: AEBP1 Subfamily: Metallopeptidase M14 Family: Exopeptidase Synonyms: AEBP1, AE binding protein 1, ACLP, AE-binding protein 1
Gene ID:	165
NCBI Accession:	NP_001120
UniProt:	Q8IUX7

Application Details

Application Notes:	Approved: IHC, IHC-P, WB (0.2 - 1 µg/mL)
Comment:	Target Species of Antibody: Human
Restrictions:	For Research Use only

Handling

Format:	Lyophilized
Reconstitution:	Distilled water
Concentration:	Lot specific
Buffer:	Lyophilized from PBS with 2 % sucrose
Handling Advice:	Avoid repeat freeze-thaw cycles.
Storage:	4 °C,-20 °C
Storage Comment:	Long term: -20°C, the use of 50% glycerol is recommended if storing aliquots in -20°C for long term use (up to 1 year) Short term (less than 1 week): 4°C. Avoid freeze-thaw cycles.

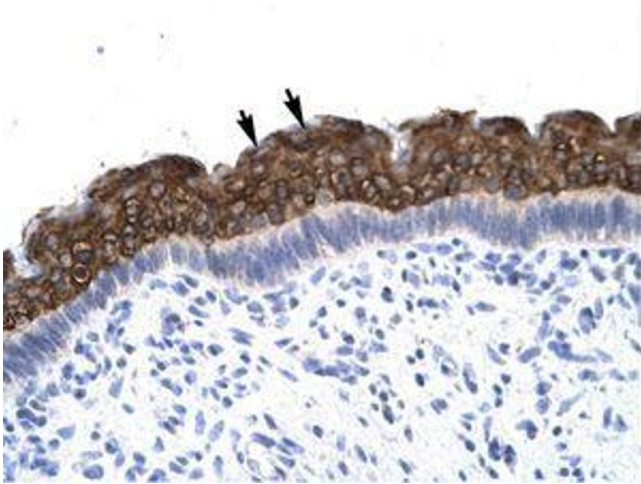


Image 1.

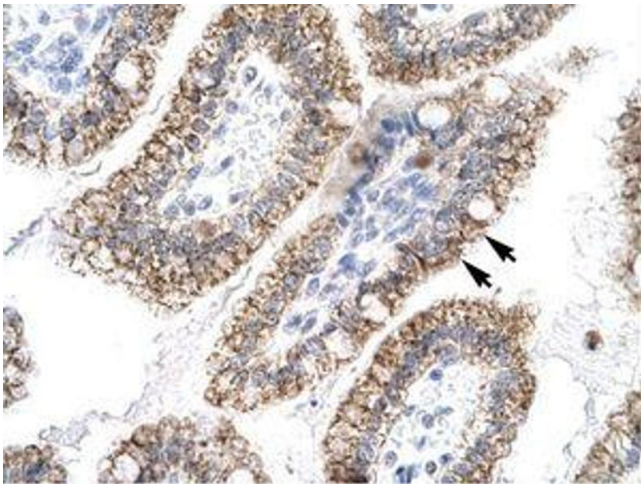


Image 2.

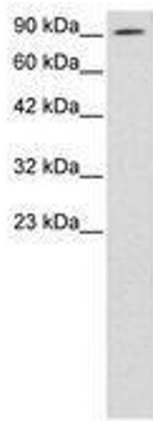


Image 3.