



[Go to Product page](#)

Datasheet for ABIN6735793

anti-JMJD8 antibody (AA 111-160)

3 Images

Overview

Quantity:	100 µL
Target:	JMJD8
Binding Specificity:	AA 111-160
Reactivity:	Human, Cow, Dog, Guinea Pig
Host:	Rabbit
Clonality:	Polyclonal
Conjugate:	This JMJD8 antibody is un-conjugated
Application:	Western Blotting (WB), Immunohistochemistry (IHC), Immunohistochemistry (Paraffin-embedded Sections) (IHC (p))

Product Details

Immunogen:	Synthetic peptide located between aa111-160 of human JMJD8 (B2RNS7, NP_001005920). Percent identity by BLAST analysis: Human, Chimpanzee, Gorilla, Gibbon (100%), Monkey, Galago, Marmoset, Mouse, Rat, Hamster, Pig (92%), Dog, Bat, Horse, Opossum, Guinea pig, Turkey, Zebra finch (84%). Type of Immunogen: Synthetic peptide
Isotype:	IgG
Specificity:	Human JMJD8
Predicted Reactivity:	Percent identity by BLAST analysis: Human (100%) Mouse, Rat, Pig (92%) Dog, Guinea pig (84%).

Product Details

Purification: Immunoaffinity purified

Target Details

Target: JMJD8

Alternative Name: JMJD8 ([JMJD8 Products](#))

Background: Name/Gene ID: JMJD8

Synonyms: JMJD8, C16orf20, Jumonji domain containing 8, PP14397

Gene ID: 339123

NCBI Accession: [NP_001005920](#)

UniProt: [Q96S16](#)

Application Details

Application Notes: Approved: IHC, IHC-P, WB (0.2 - 1 µg/mL)

Comment: Target Species of Antibody: Human

Restrictions: For Research Use only

Handling

Format: Lyophilized

Reconstitution: After adding water, will consist of PBS buffer with 2 % sucrose

Concentration: Lot specific

Buffer: Lyophilized from PBS with 2 % sucrose

Handling Advice: Avoid repeat freeze-thaw cycles.

Storage: 4 °C, -20 °C

Storage Comment: Long term: -20°C, the use of 50% glycerol is recommended if storing aliquots in -20°C for long term use (up to 1 year)

Short term (less than 1 week): 4°C. Avoid freeze-thaw cycles.

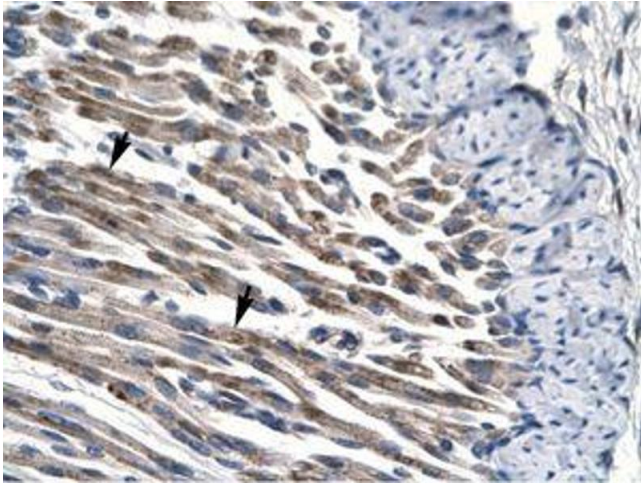


Image 1.

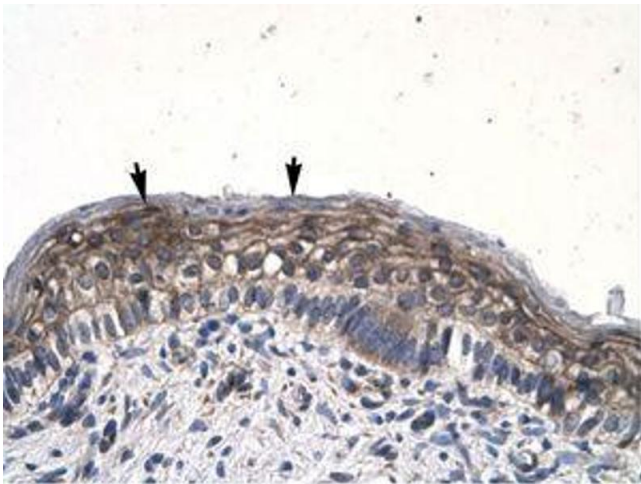


Image 2.

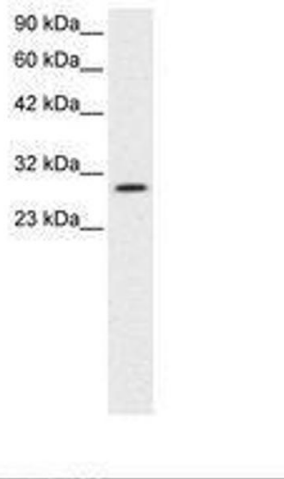


Image 3.