

Datasheet for ABIN6735800
anti-ZNF365 antibody (AA 33-82)



[Go to Product page](#)

2 Images

Overview

Quantity:	100 µL
Target:	ZNF365
Binding Specificity:	AA 33-82
Reactivity:	Human, Mouse, Rat, Rabbit, Monkey
Host:	Rabbit
Clonality:	Polyclonal
Conjugate:	This ZNF365 antibody is un-conjugated
Application:	Western Blotting (WB), Immunohistochemistry (IHC), Immunohistochemistry (Paraffin-embedded Sections) (IHC (p))

Product Details

Immunogen:	Synthetic peptide located between aa33-82 of human ZNF365 (Q70YC5, NP_955522). Percent identity by BLAST analysis: Human, Chimpanzee, Gorilla, Orangutan, Gibbon, Monkey, Galago, Marmoset, Mouse, Rat, Elephant, Rabbit (100%), Dog, Bovine, Bat, Horse, Pig, Guinea pig (92%), Opossum (85%). Type of Immunogen: Synthetic peptide
Isotype:	IgG
Specificity:	Human ZNF365
Predicted Reactivity:	Percent identity by BLAST analysis: Bovine, Horse, Pig, Guinea pig (92%).
Purification:	Immunoaffinity purified

Target Details

Target:	ZNF365
Alternative Name:	ZNF365 (ZNF365 Products)
Background:	Name/Gene ID: ZNF365 Family: Zinc Finger Synonyms: ZNF365, KIAA0844, Su48, Zinc finger protein 365, Protein su48, Talanin, UAN, Protein ZNF365, ZNF365D
Gene ID:	22891
NCBI Accession:	NP_955522
UniProt:	Q70YC5

Application Details

Application Notes:	Approved: IHC, IHC-P, WB (0.2 - 1 µg/mL)
Comment:	Target Species of Antibody: Human
Restrictions:	For Research Use only

Handling

Format:	Lyophilized
Reconstitution:	After adding water, will consist of PBS buffer with 2 % sucrose
Concentration:	Lot specific
Buffer:	Lyophilized from PBS with 2 % sucrose
Handling Advice:	Avoid repeat freeze-thaw cycles.
Storage:	4 °C,-20 °C
Storage Comment:	Long term: -20°C, the use of 50% glycerol is recommended if storing aliquots in -20°C for long term use (up to 1 year) Short term (less than 1 week): 4°C. Avoid freeze-thaw cycles.

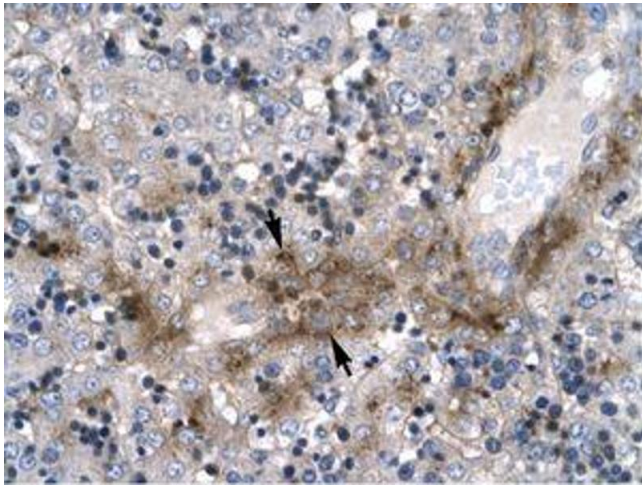


Image 1.

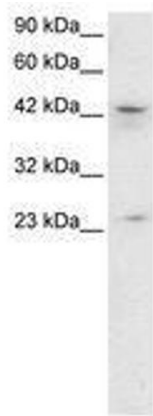


Image 2.