



[Go to Product page](#)

Datasheet for ABIN6735809  
**anti-GAS41 antibody (AA 158-207)**

3 Images

Overview

Quantity:	100 µL
Target:	GAS41
Binding Specificity:	AA 158-207
Reactivity:	Human, Mouse, Rat, Dog, Cow, Rabbit, Guinea Pig, Horse, Sheep, Zebrafish (Danio rerio), Monkey, Bat
Host:	Rabbit
Clonality:	Polyclonal
Conjugate:	This GAS41 antibody is un-conjugated
Application:	Western Blotting (WB), Immunohistochemistry (IHC), Immunohistochemistry (Paraffin- embedded Sections) (IHC (p))

Product Details

Immunogen:	Synthetic peptide located between aa158-207 of human YEATS4 (O95619, NP_006521). Percent identity by BLAST analysis: Human, Chimpanzee, Gorilla, Gibbon, Galago, Marmoset, Mouse, Rat, Sheep, Dog, Bovine, Bat, Elephant, Panda, Rabbit, Horse, Opossum, Guinea pig, Platypus (100%), Turkey, Zebra finch, Chicken (92%), Pike (85%).  Type of Immunogen: Synthetic peptide
Isotype:	IgG
Specificity:	Human YEATS4
Predicted Reactivity:	Percent identity by BLAST analysis: Human, Rat, Sheep, Dog, Bovine, Rabbit, Horse (100%)

## Product Details

---

Chicken (92%).

Purification: Immunoaffinity purified

## Target Details

---

Target: GAS41

Alternative Name: GAS41 ([GAS41 Products](#))

Background: Name/Gene ID: YEATS4

Synonyms: YEATS4, GAS41, Glioma-amplified sequence 41, Glioma-amplified sequence-41, NUBI-1, NuMA binding protein 1, NuMA-binding protein 1, NuBI1, YEATS domain containing 4, YAF9

Gene ID: 8089

NCBI Accession: [NP\\_006521](#)

UniProt: [O95619](#)

## Application Details

---

Application Notes: Approved: IHC, IHC-P, WB (0.2 - 1 µg/mL)

Comment: Target Species of Antibody: Human

Restrictions: For Research Use only

## Handling

---

Format: Lyophilized

Reconstitution: After adding water, will consist of PBS buffer with 2 % sucrose

Concentration: Lot specific

Buffer: Lyophilized from PBS with 2 % sucrose

Handling Advice: Avoid repeat freeze-thaw cycles.

Storage: 4 °C, -20 °C

Storage Comment: Long term: -20°C, the use of 50% glycerol is recommended if storing aliquots in -20°C for long term use (up to 1 year)

Short term (less than 1 week): 4°C. Avoid freeze-thaw cycles.

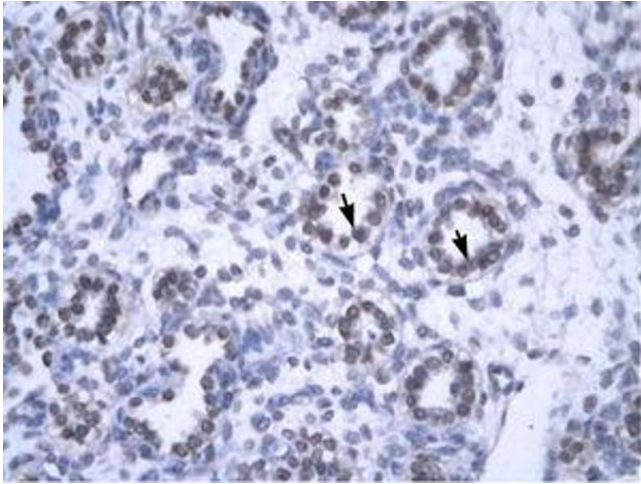


Image 1.

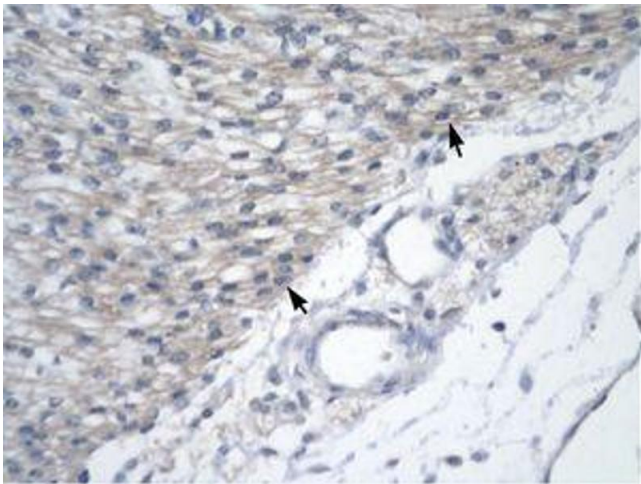


Image 2.



Image 3.