



[Go to Product page](#)

Datasheet for ABIN6735819
anti-ARHGDIG antibody (AA 42-90)

1 Image

Overview

Quantity:	100 µL
Target:	ARHGDIG
Binding Specificity:	AA 42-90
Reactivity:	Human
Host:	Rabbit
Clonality:	Polyclonal
Conjugate:	This ARHGDIG antibody is un-conjugated
Application:	Western Blotting (WB)

Product Details

Immunogen:	Synthetic peptide located between aa42-90 of human ARHGDIG (Q99819, NP_001167). Percent identity by BLAST analysis: Human, Chimpanzee, Gorilla (100%), Bat (92%), Baboon, Monkey, Galago (84%). Type of Immunogen: Synthetic peptide
Isotype:	IgG
Specificity:	Human ARHGDIG
Predicted Reactivity:	Percent identity by BLAST analysis: Human (100%).
Purification:	Immunoaffinity purified

Target Details

Target:	ARHGDIG
Alternative Name:	ARHGDIG / RHOGDI-3 (ARHGDIG Products)
Background:	Name/Gene ID: ARHGDIG Synonyms: ARHGDIG, RHOGDI-3, Rho GDI 3, Rho-GDI gamma, RhoGDI gamma
Gene ID:	398
NCBI Accession:	NP_001167
UniProt:	Q99819

Application Details

Application Notes:	Approved: WB (0.2 - 1 µg/mL)
Comment:	Target Species of Antibody: Human
Restrictions:	For Research Use only

Handling

Format:	Lyophilized
Reconstitution:	After adding water, will consist of PBS buffer with 2 % sucrose
Concentration:	Lot specific
Buffer:	Lyophilized from PBS with 2 % sucrose
Handling Advice:	Avoid repeat freeze-thaw cycles.
Storage:	4 °C, -20 °C
Storage Comment:	Long term: -20°C, the use of 50% glycerol is recommended if storing aliquots in -20°C for long term use (up to 1 year) Short term (less than 1 week): 4°C. Avoid freeze-thaw cycles.

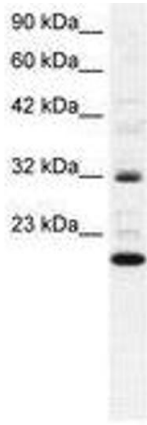


Image 1.