



Datasheet for ABIN6735824  
**anti-NFKB2 antibody (AA 711-758)**



[Go to Product page](#)

3 Images

Overview

Quantity:	100 µL
Target:	NFKB2
Binding Specificity:	AA 711-758
Reactivity:	Human, Cow, Horse
Host:	Rabbit
Clonality:	Polyclonal
Conjugate:	This NFKB2 antibody is un-conjugated
Application:	Western Blotting (WB), Immunohistochemistry (IHC), Immunohistochemistry (Paraffin-embedded Sections) (IHC (p))

Product Details

Immunogen:	Synthetic peptide located between aa711-758 of human NFKB2 (Q00653, NP_002493). Percent identity by BLAST analysis: Human, Gorilla, Gibbon, Monkey (100%), Marmoset, Elephant, Rabbit (92%), Galago (91%), Horse (84%).  Type of Immunogen: Synthetic peptide
Isotype:	IgG
Specificity:	Human NFKB2
Predicted Reactivity:	Percent identity by BLAST analysis: Human (100%) Rabbit (92%) Horse (84%).
Purification:	Immunoaffinity purified

## Target Details

---

Target:	NFKB2
Alternative Name:	NFKB2 ( <a href="#">NFKB2 Products</a> )
Background:	Name/Gene ID: NFKB2  Synonyms: NFKB2, DNA-binding factor KBF2, LYT10, Oncogene Lyt-10, p52, LYT-10, NF-kB2, p105, H2TF1
Gene ID:	4791
NCBI Accession:	<a href="#">NP_002493</a>
UniProt:	<a href="#">Q00653</a>
Pathways:	<a href="#">Toll-Like Receptors Cascades</a>

## Application Details

---

Application Notes:	Approved: IHC, IHC-P, WB (0.2 - 1 µg/mL)
Comment:	Target Species of Antibody: Human
Restrictions:	For Research Use only

## Handling

---

Format:	Lyophilized
Reconstitution:	Distilled water
Concentration:	Lot specific
Buffer:	Lyophilized from PBS with 2 % sucrose
Handling Advice:	Avoid repeat freeze-thaw cycles.
Storage:	4 °C,-20 °C
Storage Comment:	Long term: -20°C, the use of 50% glycerol is recommended if storing aliquots in -20°C for long term use (up to 1 year)  Short term (less than 1 week): 4°C. Avoid freeze-thaw cycles.

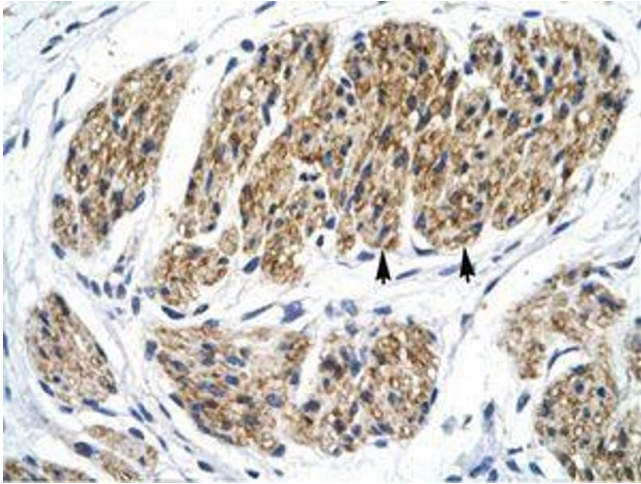


Image 1.

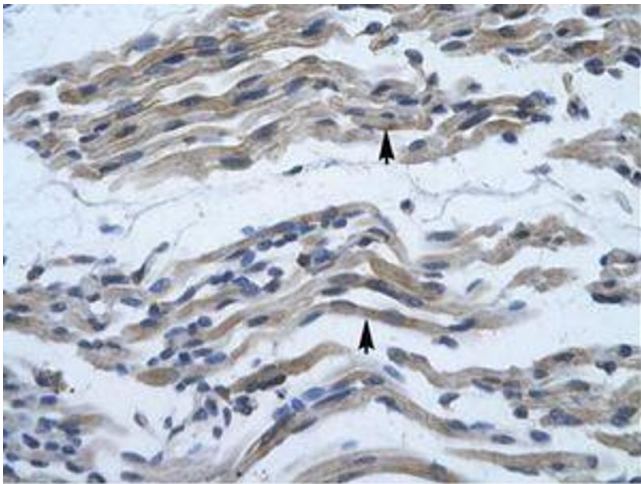


Image 2.



Image 3.