



[Go to Product page](#)

Datasheet for ABIN6735842  
**anti-ZFPL1 antibody (AA 101-150)**

2 Images

Overview

Quantity:	100 µL
Target:	ZFPL1
Binding Specificity:	AA 101-150
Reactivity:	Human, Mouse, Cow, Rabbit, Goat, Guinea Pig, Hamster, Pig
Host:	Rabbit
Clonality:	Polyclonal
Conjugate:	This ZFPL1 antibody is un-conjugated
Application:	Western Blotting (WB), Immunohistochemistry (Paraffin-embedded Sections) (IHC (p)), Immunohistochemistry (IHC)

Product Details

Immunogen:	Synthetic peptide located between aa101-150 of human ZFPL1 (O95159, NP_006773). Percent identity by BLAST analysis: Human, Chimpanzee, Gorilla, Gibbon, Monkey, Mouse, Goat, Hamster, Elephant, Bovine, Rabbit, Pig, Guinea pig (100%), Galago, Dog (92%), Marmoset, Horse (91%).  Type of Immunogen: Synthetic peptide
Isotype:	IgG
Specificity:	Human ZFPL1
Predicted Reactivity:	Percent identity by BLAST analysis: Human, Mouse, Bovine, Goat, Rabbit (100%) Dog (92%) Horse (91%).

## Product Details

---

Purification: Immunoaffinity purified

## Target Details

---

Target: ZFPL1

Alternative Name: ZFPL1 ([ZFPL1 Products](#))

Background: Name/Gene ID: ZFPL1

Synonyms: ZFPL1, D11S750, MCG4, Zinc finger protein MCG4, Zinc finger protein-like 1

Gene ID: 7542

NCBI Accession: [NP\\_006773](#)

UniProt: [O95159](#)

## Application Details

---

Application Notes: Approved: IHC, IHC-P, WB (0.2 - 1 µg/mL)

Comment: Target Species of Antibody: Human

Restrictions: For Research Use only

## Handling

---

Format: Lyophilized

Reconstitution: After adding water, will consist of PBS buffer with 2 % sucrose

Concentration: Lot specific

Buffer: Lyophilized from PBS with 2 % sucrose

Handling Advice: Avoid repeat freeze-thaw cycles.

Storage: 4 °C, -20 °C

Storage Comment: Long term: -20°C, the use of 50% glycerol is recommended if storing aliquots in -20°C for long term use (up to 1 year)

Short term (less than 1 week): 4°C. Avoid freeze-thaw cycles.

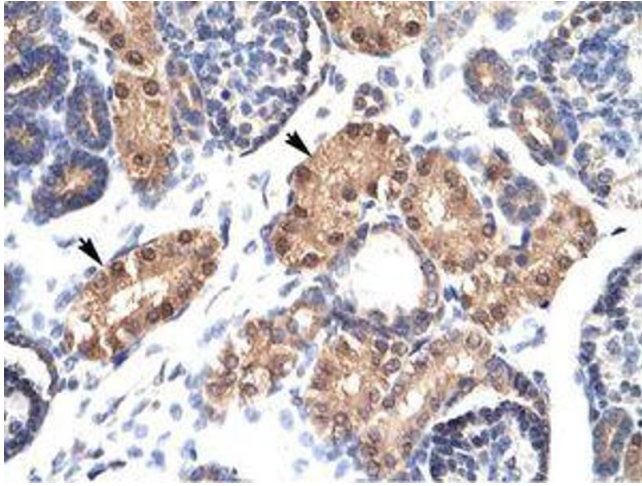


Image 1.

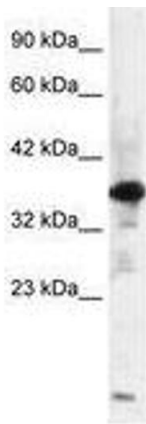


Image 2.