

Datasheet for ABIN6735848
anti-MYEF2 antibody (AA 227-276)



[Go to Product page](#)

2 Images

Overview

Quantity:	100 µL
Target:	MYEF2
Binding Specificity:	AA 227-276
Reactivity:	Human, Mouse, Rat, Dog, Cow, Horse, Rabbit, Guinea Pig, Zebrafish (Danio rerio), Xenopus laevis, Chicken, Bat, Monkey, Pig
Host:	Rabbit
Clonality:	Polyclonal
Conjugate:	This MYEF2 antibody is un-conjugated
Application:	Western Blotting (WB), Immunohistochemistry (IHC), Immunohistochemistry (Paraffin-embedded Sections) (IHC (p))

Product Details

Immunogen:	Synthetic peptide located between aa227-276 of human MYEF2 (Q9P2K5, NP_057216). Percent identity by BLAST analysis: Human, Chimpanzee, Gorilla, Gibbon, Monkey, Galago, Marmoset, Mouse, Rat, Elephant, Dog, Bovine, Bat, Rabbit, Horse, Pig, Opossum, Guinea pig, Turkey, Zebra finch, Chicken, Xenopus (100%), Salmon (92%), Platypus (85%), Stickleback, Zebrafish (84%). Type of Immunogen: Synthetic peptide
Isotype:	IgG
Specificity:	Human MYEF2
Predicted Reactivity:	Percent identity by BLAST analysis: Human, Mouse, Rat, Dog, Bovine, Rabbit, Horse, Pig, Guinea

Product Details

pig, Chicken (100%) Xenopus (92%) Zebrafish (84%).

Purification: Immunoaffinity purified

Target Details

Target: MYEF2

Alternative Name: MYEF2 ([MYEF2 Products](#))

Background: Name/Gene ID: MYEF2

Synonyms: MYEF2, KIAA1341, MST156, MyEF-2, MEF-2, MSTP156, HsT18564, Myelin expression factor 2

Gene ID: 50804

NCBI Accession: [NP_057216](#)

UniProt: [Q9P2K5](#)

Application Details

Application Notes: Approved: IHC, IHC-P, WB (0.2 - 1 µg/mL)

Comment: Target Species of Antibody: Human

Restrictions: For Research Use only

Handling

Format: Lyophilized

Reconstitution: After adding water, will consist of PBS buffer with 2 % sucrose

Concentration: Lot specific

Buffer: Lyophilized from PBS with 2 % sucrose

Handling Advice: Avoid repeat freeze-thaw cycles.

Storage: 4 °C, -20 °C

Storage Comment: Long term: -20°C, the use of 50% glycerol is recommended if storing aliquots in -20°C for long term use (up to 1 year)

Short term (less than 1 week): 4°C. Avoid freeze-thaw cycles.

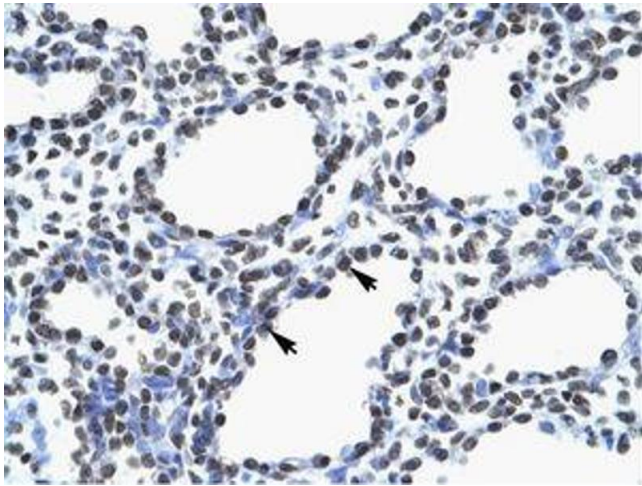


Image 1.



Image 2.