



[Go to Product page](#)

Datasheet for ABIN6735863  
**anti-ZKSCAN3 antibody (N-Term)**

1 Image

Overview

Quantity:	100 µL
Target:	ZKSCAN3
Binding Specificity:	N-Term
Reactivity:	Human, Monkey
Host:	Rabbit
Clonality:	Polyclonal
Conjugate:	This ZKSCAN3 antibody is un-conjugated
Application:	Western Blotting (WB)

Product Details

Immunogen:	Synthetic peptide from N-Terminus of human ZKSCAN3 (Q9BRR0, NP_077819). Percent identity by BLAST analysis: Human, Chimpanzee, Gorilla, Gibbon, Monkey, Marmoset (100%). Type of Immunogen: Synthetic peptide
Isotype:	IgG
Specificity:	Human ZKSCAN3 / ZNF306
Predicted Reactivity:	Percent identity by BLAST analysis: Human (100%).
Purification:	Immunoaffinity purified

Target Details

Target:	ZKSCAN3
---------	---------

## Target Details

---

Alternative Name: ZKSCAN3 / ZNF306 ([ZKSCAN3 Products](#))

---

Background: Name/Gene ID: ZKSCAN3  
Family: Zinc Finger

Synonyms: ZKSCAN3, DJ874C20.1, DJ874C20.1., KIAA0426, Zfp-47, ZFP306, Zinc finger protein 309, ZNF306, ZNF309, ZSCAN13, ZSCAN35, ZF47, Zinc finger protein 306, Zinc finger protein zfp47, Zfp47, Zinc finger protein 47 homolog

---

Gene ID: 80317

---

NCBI Accession: [NP\\_077819](#)

---

## Application Details

---

Application Notes: Approved: WB (0.2 - 1 µg/mL)

---

Comment: Target Species of Antibody: Human

---

Restrictions: For Research Use only

---

## Handling

---

Format: Lyophilized

---

Reconstitution: After adding water, will consist of PBS buffer with 2 % sucrose

---

Concentration: Lot specific

---

Buffer: Lyophilized from PBS with 2 % sucrose

---

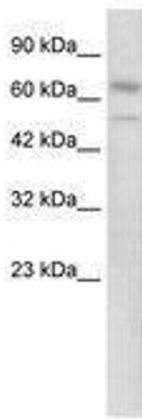
Handling Advice: Avoid repeat freeze-thaw cycles.

---

Storage: 4 °C, -20 °C

---

Storage Comment: Long term: -20°C, the use of 50% glycerol is recommended if storing aliquots in -20°C for long term use (up to 1 year)  
Short term (less than 1 week): 4°C. Avoid freeze-thaw cycles.



**Image 1.**