



Datasheet for ABIN6735864  
**anti-BARX1 antibody (AA 91-140)**



[Go to Product page](#)

3 Images

Overview

Quantity:	100 µL
Target:	BARX1
Binding Specificity:	AA 91-140
Reactivity:	Human, Rat, Mouse, Pig, Rabbit, Cow, Dog
Host:	Rabbit
Clonality:	Polyclonal
Conjugate:	This BARX1 antibody is un-conjugated
Application:	Western Blotting (WB), Immunohistochemistry (IHC), Immunohistochemistry (Paraffin-embedded Sections) (IHC (p))

Product Details

Immunogen:	Synthetic peptide located between aa91-140 of human BARX1 (Q9HBU1, NP_067545). Percent identity by BLAST analysis: Human, Chimpanzee, Gorilla, Gibbon, Monkey, Bovine, Rabbit, Pig (100%), Galago, Marmoset, Elephant, Guinea pig (92%), Mouse, Dog, Chicken (85%), Rat (78%).  Type of Immunogen: Synthetic peptide
Isotype:	IgG
Specificity:	Human BARX1
Predicted Reactivity:	Percent identity by BLAST analysis: Human, Bovine, Rabbit, Pig (100%) Mouse, Dog, Chicken (85%).
Purification:	Immunoaffinity purified

## Target Details

---

Target:	BARX1
Alternative Name:	BARX1 ( <a href="#">BARX1 Products</a> )
Background:	Name/Gene ID: BARX1  Synonyms: BARX1, BarH-like homeobox 1, BARX homeobox 1, Homeobox protein BarH-like 1
Gene ID:	56033
NCBI Accession:	<a href="#">NP_067545</a>
UniProt:	<a href="#">Q9HBU1</a>
Pathways:	<a href="#">Sensory Perception of Sound</a>

## Application Details

---

Application Notes:	Approved: IHC, IHC-P, WB (0.2 - 1 µg/mL)
Comment:	Target Species of Antibody: Human
Restrictions:	For Research Use only

## Handling

---

Format:	Lyophilized
Reconstitution:	After adding water, will consist of PBS buffer with 2 % sucrose
Concentration:	Lot specific
Buffer:	Lyophilized from PBS with 2 % sucrose
Handling Advice:	Avoid repeat freeze-thaw cycles.
Storage:	4 °C, -20 °C
Storage Comment:	Long term: -20°C, the use of 50% glycerol is recommended if storing aliquots in -20°C for long term use (up to 1 year)  Short term (less than 1 week): 4°C. Avoid freeze-thaw cycles.



Image 1.

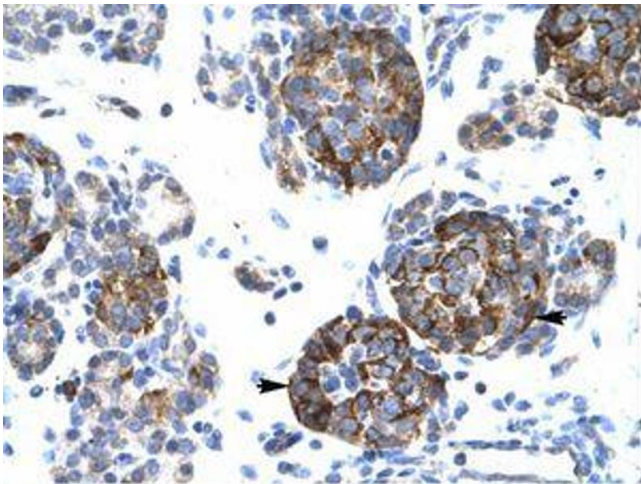


Image 2.

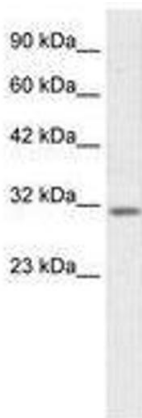


Image 3.