

Datasheet for ABIN6735868  
**anti-ATG4B antibody (C-Term)**



[Go to Product page](#)

2 Images

## Overview

Quantity:	100 µL
Target:	ATG4B
Binding Specificity:	C-Term
Reactivity:	Human, Mouse, Rat, Zebrafish (Danio rerio), Dog, Guinea Pig, Rabbit, Horse, Monkey, Bat, Pig
Host:	Rabbit
Clonality:	Polyclonal
Conjugate:	This ATG4B antibody is un-conjugated
Application:	Western Blotting (WB), Immunohistochemistry (IHC), Immunohistochemistry (Paraffin-embedded Sections) (IHC (p))

## Product Details

Immunogen:	Synthetic peptide from C-Terminus of human ATG4B (Q9Y4P1, NP_037457). Percent identity by BLAST analysis: Human, Gorilla, Gibbon, Galago, Marmoset, Mouse, Rat, Elephant, Dog, Bat, Rabbit, Horse, Pig, Opossum, Guinea pig (100%), Bovine, Platypus (92%), Turkey, Zebra finch, Chicken, Lizard (85%), Salmon, Stickleback, Zebrafish (84%).  Type of Immunogen: Synthetic peptide
Isotype:	IgG
Specificity:	Human ATG4B
Predicted Reactivity:	Percent identity by BLAST analysis: Human, Mouse, Rat, Pig, Tunicate (100%) Bovine (92%) Chicken (85%) Salmon, Zebrafish (84%).

## Product Details

---

Purification: Immunoaffinity purified

## Target Details

---

Target: ATG4B

Alternative Name: APG4B / ATG4B ([ATG4B Products](#))

Background: Name/Gene ID: ATG4B

Synonyms: ATG4B, APG4 autophagy 4 homolog B, AUTL1, Autophagin-1, Cysteine protease  
ATG4B, HAPG4B, APG4B, KIAA0943

Gene ID: 23192

NCBI Accession: [NP\\_037457](#)

UniProt: [Q9Y4P1](#)

Pathways: [Autophagy](#)

## Application Details

---

Application Notes: Approved: IHC, IHC-P, WB (0.2 - 1 µg/mL)

Comment: Target Species of Antibody: Human

Restrictions: For Research Use only

## Handling

---

Format: Lyophilized

Reconstitution: After adding water, will consist of PBS buffer with 2 % sucrose

Concentration: Lot specific

Buffer: Lyophilized from PBS with 2 % sucrose

Handling Advice: Avoid repeated freezing and thawing.

Storage: 4 °C, -20 °C

Storage Comment: Long term: -20°C, the use of 50% glycerol is recommended if storing aliquots in -20°C for long term use (up to 1 year)

Short term (less than 1 week): 4°C. Avoid freeze-thaw cycles.

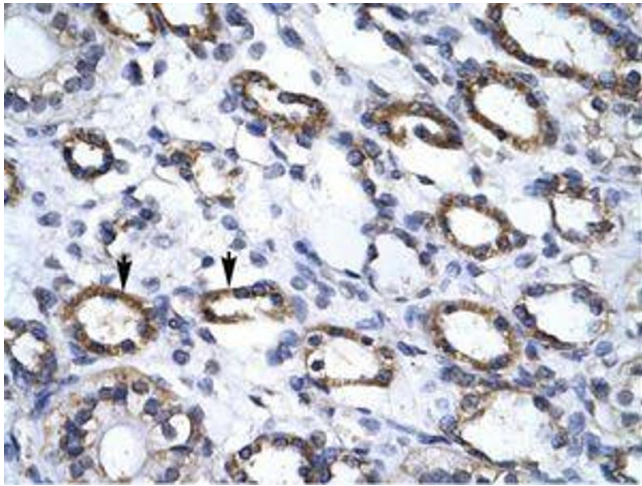


Image 1.



Image 2.