



[Go to Product page](#)

Datasheet for ABIN6735872  
**anti-IRF2 antibody (AA 52-101)**

1 Image

Overview

Quantity:	100 µL
Target:	IRF2
Binding Specificity:	AA 52-101
Reactivity:	Human, Rat, Dog, Horse, Guinea Pig, Rabbit, Pig, Monkey, Hamster, Bat
Host:	Rabbit
Clonality:	Polyclonal
Conjugate:	This IRF2 antibody is un-conjugated
Application:	Western Blotting (WB)

Product Details

Immunogen:	Synthetic peptide located between aa52-101 of human IRF2 (P14316, NP_002190). Percent identity by BLAST analysis: Human, Gorilla, Orangutan, Gibbon, Monkey, Galago, Marmoset, Rat, Hamster, Elephant, Dog, Bat, Rabbit, Horse, Pig, Opossum, Guinea pig (100%), Mouse, Sheep, Bovine (92%), Pike, Zebrafish (90%), Turkey, Chicken, Xenopus (85%).  Type of Immunogen: Synthetic peptide
Isotype:	IgG
Specificity:	Human IRF2
Predicted Reactivity:	Percent identity by BLAST analysis: Human, Rat, Dog, Horse, Pig, Guinea pig (100%) Mouse, Sheep, Bovine (92%) Zebrafish (90%) Chicken, Xenopus (85%).
Purification:	Immunoaffinity purified

## Target Details

---

Target:	IRF2
Alternative Name:	IRF2 ( <a href="#">IRF2 Products</a> )
Background:	Name/Gene ID: IRF2  Synonyms: IRF2, IRF-2, Interferon regulatory factor 2
Gene ID:	3660
NCBI Accession:	<a href="#">NP_002190</a>
UniProt:	<a href="#">P14316</a>

## Application Details

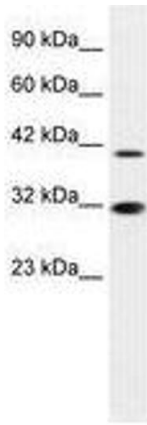
---

Application Notes:	Approved: WB (0.2 - 1 µg/mL)
Comment:	Target Species of Antibody: Human
Restrictions:	For Research Use only

## Handling

---

Format:	Lyophilized
Reconstitution:	After adding water, will consist of PBS buffer with 2 % sucrose
Concentration:	Lot specific
Buffer:	Lyophilized.
Handling Advice:	Avoid repeat freeze-thaw cycles.
Storage:	4 °C, -20 °C
Storage Comment:	Long term: -20°C, the use of 50% glycerol is recommended if storing aliquots in -20°C for long term use (up to 1 year)  Short term (less than 1 week): 4°C. Avoid freeze-thaw cycles.



**Image 1.**