

Datasheet for ABIN6735889
anti-RNF141 antibody (AA 96-145)



[Go to Product page](#)

3 Images

Overview

Quantity:	100 µL
Target:	RNF141
Binding Specificity:	AA 96-145
Reactivity:	Human, Mouse, Monkey
Host:	Rabbit
Clonality:	Polyclonal
Conjugate:	This RNF141 antibody is un-conjugated
Application:	Western Blotting (WB), Immunohistochemistry (IHC), Immunohistochemistry (Paraffin-embedded Sections) (IHC (p))

Product Details

Immunogen:	Synthetic peptide located between aa96-145 of human RNF141 (Q8WVD5, NP_057506). Percent identity by BLAST analysis: Human, Chimpanzee, Gorilla, Orangutan, Gibbon, Monkey, Mouse (100%), Galago, Rat, Dog, Bat, Guinea pig (92%), Marmoset, Elephant, Bovine, Horse (85%), Hamster, Rabbit (84%). Type of Immunogen: Synthetic peptide
Isotype:	IgG
Specificity:	Human RNF141
Predicted Reactivity:	Percent identity by BLAST analysis: Human, Mouse (100%) Rat (92%).
Purification:	Immunoaffinity purified

Target Details

Target:	RNF141
Alternative Name:	RNF141 (RNF141 Products)
Background:	Name/Gene ID: RNF141 Synonyms: RNF141, C3HC4-like zinc finger protein, Ring finger protein 141, ZFP26, Zinc finger protein 230
Gene ID:	50862
NCBI Accession:	NP_057506
UniProt:	Q8WVD5

Application Details

Application Notes:	Approved: IHC, IHC-P, WB (0.2 - 1 µg/mL)
Comment:	Target Species of Antibody: Human
Restrictions:	For Research Use only

Handling

Format:	Lyophilized
Reconstitution:	After adding water, will consist of PBS buffer with 2 % sucrose
Concentration:	Lot specific
Buffer:	Lyophilized from PBS with 2 % sucrose
Handling Advice:	Avoid repeat freeze-thaw cycles.
Storage:	4 °C, -20 °C
Storage Comment:	Long term: -20°C, the use of 50% glycerol is recommended if storing aliquots in -20°C for long term use (up to 1 year) Short term (less than 1 week): 4°C. Avoid freeze-thaw cycles.

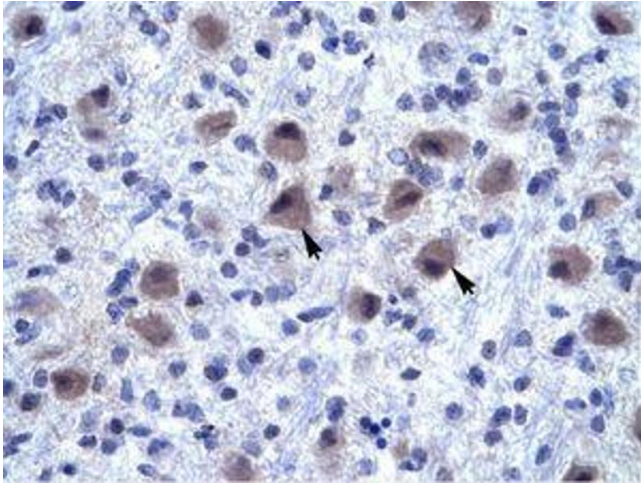


Image 1.

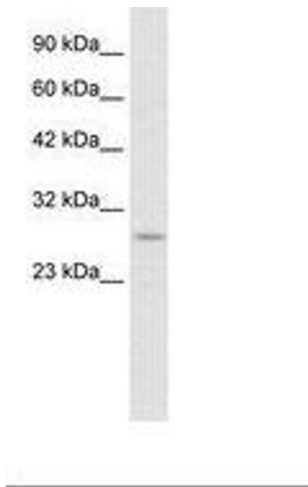


Image 2.

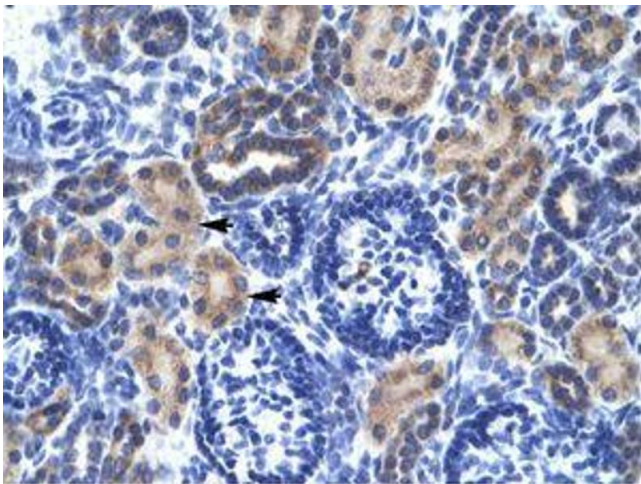


Image 3.