

Datasheet for ABIN6735891
anti-TAF1 antibody (C-Term)



[Go to Product page](#)

2 Images

Overview

Quantity:	100 µL
Target:	TAF1
Binding Specificity:	C-Term
Reactivity:	Human, Dog, Horse, Pig, Chicken, Monkey
Host:	Rabbit
Clonality:	Polyclonal
Conjugate:	This TAF1 antibody is un-conjugated
Application:	Western Blotting (WB), Immunohistochemistry (IHC), Immunohistochemistry (Paraffin-embedded Sections) (IHC (p))

Product Details

Immunogen:	Synthetic peptide from C-Terminus of human TAF1 (P21675-2, NP_620278). Percent identity by BLAST analysis: Human, Chimpanzee, Gorilla, Monkey, Marmoset, Panda, Dog, Horse, Pig, Zebra finch, Chicken (100%), Mouse, Rat, Hamster (92%). Type of Immunogen: Synthetic peptide
Isotype:	IgG
Specificity:	Human TAF1
Predicted Reactivity:	Percent identity by BLAST analysis: Human, Dog, Chicken (100%) Mouse, Rat, Horse (92%).
Purification:	Immunoaffinity purified

Target Details

Target:	TAF1
Alternative Name:	TAF1 (TAF1 Products)
Background:	Name/Gene ID: TAF1 Subfamily: TAF1 Family: Protein Kinase Synonyms: TAF1, BA2R, CCG1, CCGS, Cell cycle, G1 phase defect, CELL CYCLE GENE 1, Cell cycle gene 1 protein, Dystonia 3 (with Parkinsonism), DYT3, TAF(II)250, TBP Associated Factor 1, N-TAF1, NSCL2, p250, TAFII250, XDP, KAT4, TAF2A, TAFII-250, TBP-associated factor 250 kDa
Gene ID:	6872
NCBI Accession:	NP_620278
UniProt:	P21675

Application Details

Application Notes:	Approved: IHC, IHC-P, WB (0.2 - 1 µg/mL)
Comment:	Target Species of Antibody: Human
Restrictions:	For Research Use only

Handling

Format:	Lyophilized
Reconstitution:	After adding water, will consist of PBS buffer with 2 % sucrose
Concentration:	Lot specific
Buffer:	Lyophilized from PBS with 2 % sucrose
Handling Advice:	Avoid repeat freeze-thaw cycles.
Storage:	4 °C,-20 °C
Storage Comment:	Long term: -20°C, the use of 50% glycerol is recommended if storing aliquots in -20°C for long term use (up to 1 year) Short term (less than 1 week): 4°C. Avoid freeze-thaw cycles.

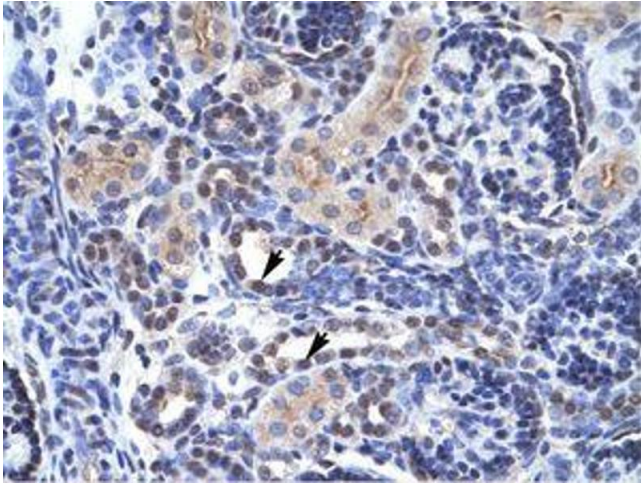


Image 1.



Image 2.