



[Go to Product page](#)

Datasheet for ABIN6735904  
**anti-PRR7 antibody (AA 160-209)**

2 Images

Overview

|                      |  |
|----------------------|--|
| Quantity:            | 100 µL   |
| Target:              | PRR7   |
| Binding Specificity: | AA 160-209   |
| Reactivity:          | Human, Mouse, Rat, Dog, Rabbit, Cow, Guinea Pig, Horse, Bat, Monkey  |
| Host:                | Rabbit   |
| Clonality:           | Polyclonal   |
| Conjugate:           | This PRR7 antibody is un-conjugated  |
| Application:         | Western Blotting (WB), Immunohistochemistry (IHC), Immunohistochemistry (Paraffin-embedded Sections) (IHC (p)) |

Product Details

|                       |  |
|-----------------------|--|
| Immunogen:            | Synthetic peptide located between aa160-209 of human PRR7 (Q8WU53, NP_085044). Percent identity by BLAST analysis: Human, Chimpanzee, Gorilla, Monkey, Galago, Marmoset, Mouse, Rat, Panda, Dog, Bovine, Bat, Rabbit, Horse, Guinea pig (100%), Opossum (84%).<br><br>Type of Immunogen: Synthetic peptide |
| Isotype:              | IgG  |
| Specificity:          | Human PRR7   |
| Predicted Reactivity: | Percent identity by BLAST analysis: Human, Mouse, Rat, Dog, Bovine, Rabbit, Horse, Guinea pig (100%).  |
| Purification:         | Immunoaffinity purified  |

## Target Details

---

|                   |   |
|-------------------|---|
| Target:           | PRR7  |
| Alternative Name: | PRR7 ( <a href="#">PRR7 Products</a> )  |
| Background:       | Name/Gene ID: PRR7<br><br>Synonyms: PRR7, Proline-rich protein 7, Proline rich 7 (synaptic) |
| Gene ID:          | 80758   |
| NCBI Accession:   | <a href="#">NP_085044</a>   |
| UniProt:          | <a href="#">Q8TB68</a>  |

## Application Details

---

|                    |  |
|--------------------|--|
| Application Notes: | Approved: IHC, IHC-P, WB (0.2 - 1 µg/mL) |
| Comment:           | Target Species of Antibody: Human        |
| Restrictions:      | For Research Use only                    |

## Handling

---

|                  |   |
|------------------|---|
| Format:          | Lyophilized   |
| Reconstitution:  | After adding water, will consist of PBS buffer with 2 % sucrose   |
| Concentration:   | Lot specific  |
| Buffer:          | Lyophilized from PBS with 2 % sucrose   |
| Handling Advice: | Avoid repeat freeze-thaw cycles.  |
| Storage:         | 4 °C, -20 °C  |
| Storage Comment: | Long term: -20°C, the use of 50% glycerol is recommended if storing aliquots in -20°C for long term use (up to 1 year)<br><br>Short term (less than 1 week): 4°C. Avoid freeze-thaw cycles. |

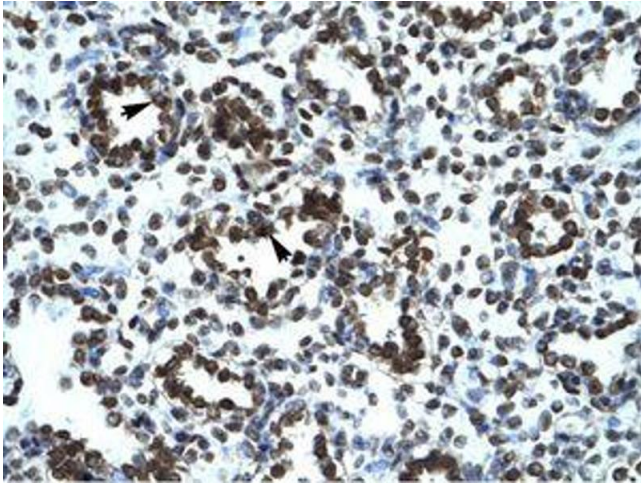


Image 1.

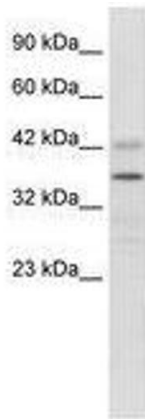


Image 2.