

Datasheet for ABIN6735909
anti-KRT15 antibody (C-Term)



[Go to Product page](#)

2 Images

Overview

Quantity:	100 µL
Target:	KRT15
Binding Specificity:	C-Term
Reactivity:	Human, Mouse, Cow
Host:	Rabbit
Clonality:	Polyclonal
Conjugate:	This KRT15 antibody is un-conjugated
Application:	Western Blotting (WB), Immunohistochemistry (IHC), Immunohistochemistry (Paraffin-embedded Sections) (IHC (p))

Product Details

Immunogen:	Synthetic peptide from C-Terminus of human KRT15 (P19012, NP_002266). Percent identity by BLAST analysis: Human (100%), Gorilla, Gibbon, Monkey, Mouse, Sheep, Bovine, Pig, Opossum (86%), Rat, Platypus (85%), Marmoset, Panda (80%). Type of Immunogen: Synthetic peptide
Isotype:	IgG
Specificity:	Human KRT15 / Cytokeratin 15
Predicted Reactivity:	Percent identity by BLAST analysis: Human (100%) Mouse, Bovine (86%).
Purification:	Immunoaffinity purified

Target Details

Target:	KRT15
Alternative Name:	KRT15 / CK15 / Cytokeratin 15 (KRT15 Products)
Background:	Name/Gene ID: KRT15 Family: Keratin Synonyms: KRT15, CK15, Cytokeratin 15, CK-15, K1CO, Keratin 15, K15, Keratin-15, basic, KRTB, Cytokeratin-15, Keratin-15, Keratin-15, beta, Type I cytoskeletal 15
Gene ID:	3866
NCBI Accession:	NP_002266

Application Details

Application Notes:	Approved: IHC, IHC-P, WB (0.2 - 1 µg/mL)
Comment:	Target Species of Antibody: Human
Restrictions:	For Research Use only

Handling

Format:	Lyophilized
Reconstitution:	After adding water, will consist of PBS buffer with 2 % sucrose
Concentration:	Lot specific
Buffer:	Lyophilized.
Storage:	4 °C,-20 °C
Storage Comment:	Long term: -20°C, the use of 50% glycerol is recommended if storing aliquots in -20°C for long term use (up to 1 year) Short term (less than 1 week): 4°C. Avoid freeze-thaw cycles.

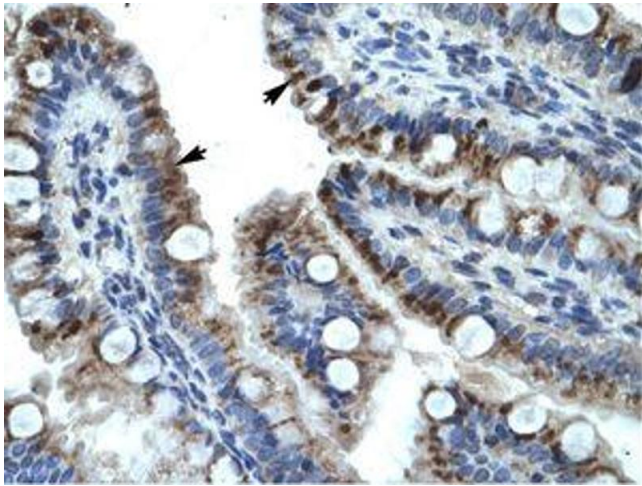


Image 1.



Image 2.