



[Go to Product page](#)

Datasheet for ABIN6735918
anti-PLRG1 antibody (AA 52-101)

1 Image

Overview

Quantity:	100 µL
Target:	PLRG1
Binding Specificity:	AA 52-101
Reactivity:	Human, Mouse, Rat, Cow, Rabbit, Guinea Pig, Monkey
Host:	Rabbit
Clonality:	Polyclonal
Conjugate:	This PLRG1 antibody is un-conjugated
Application:	Western Blotting (WB)

Product Details

Immunogen:	Synthetic peptide located between aa52-101 of human PLRG1 (O43660, NP_002660). Percent identity by BLAST analysis: Human, Chimpanzee, Gorilla, Gibbon, Marmoset, Mouse, Rat, Rabbit, Guinea pig (100%), Pig (92%), Galago, Horse (91%), Bovine (84%). Type of Immunogen: Synthetic peptide
Isotype:	IgG
Specificity:	Human PLRG1
Predicted Reactivity:	Percent identity by BLAST analysis: Human, Mouse, Rabbit (100%) Rat, Pig (92%) Horse (91%) Bovine (84%).
Purification:	Immunoaffinity purified

Target Details

Target:	PLRG1
Alternative Name:	PLRG1 (PLRG1 Products)
Background:	Name/Gene ID: PLRG1 Synonyms: PLRG1, Cwc1, Pleiotropic regulator 1, PRPF46, PRL1, PRP46, TANGO4
Gene ID:	5356
NCBI Accession:	NP_002660
UniProt:	O43660

Application Details

Application Notes:	Approved: WB (0.2 - 1 µg/mL)
Comment:	Target Species of Antibody: Human
Restrictions:	For Research Use only

Handling

Format:	Lyophilized
Reconstitution:	After adding water, will consist of PBS buffer with 2 % sucrose
Concentration:	Lot specific
Buffer:	Lyophilized from PBS with 2 % sucrose
Handling Advice:	Avoid repeat freeze-thaw cycles.
Storage:	4 °C, -20 °C
Storage Comment:	Long term: -20°C, the use of 50% glycerol is recommended if storing aliquots in -20°C for long term use (up to 1 year) Short term (less than 1 week): 4°C. Avoid freeze-thaw cycles.

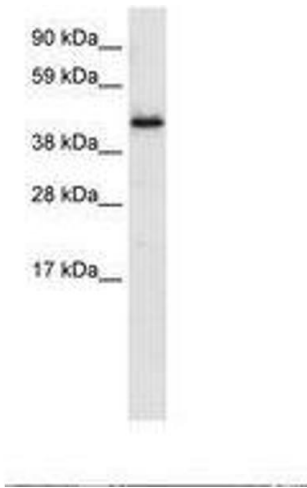


Image 1.