



Datasheet for ABIN6735939

anti-Retinoblastoma Protein (Rb) antibody (AA 703-752)



[Go to Product page](#)

1 Image

Overview

Quantity:	100 µL
Target:	Retinoblastoma Protein (Rb) (Rb Protein)
Binding Specificity:	AA 703-752
Reactivity:	Human, Cow, Dog, Monkey, Pig, Rabbit, Horse, Bat, Guinea Pig
Host:	Rabbit
Clonality:	Polyclonal
Conjugate:	This Retinoblastoma Protein (Rb) antibody is un-conjugated
Application:	Western Blotting (WB)

Product Details

Immunogen:	Synthetic peptide located between aa703-752 of human RB1 (P06400, NP_000312). Percent identity by BLAST analysis: Human, Chimpanzee, Gorilla, Gibbon, Monkey, Marmoset, Elephant, Panda, Dog, Bovine, Bat, Rabbit, Horse, Pig, Guinea pig (100%), Galago, Mouse, Rat, Opossum (91%). Type of Immunogen: Synthetic peptide
Isotype:	IgG
Specificity:	Human RB1
Predicted Reactivity:	Percent identity by BLAST analysis: Human, Dog, Bovine, Rabbit, Horse, Pig, Guinea pig (100%) Mouse (91%).
Purification:	Immunoaffinity purified

Target Details

Target:	Retinoblastoma Protein (Rb) (Rb Protein)
Alternative Name:	RB1 / Retinoblastoma / RB (Rb Protein Products)
Background:	Name/Gene ID: RB1 Synonyms: RB1, p105-Rb, Osteosarcoma, PRb, Retinoblastoma, Retinoblastoma 1, OSRC, RB, Pp110
Gene ID:	5925
NCBI Accession:	NP_000312
UniProt:	P06400
Pathways:	Mitotic G1-G1/S Phases

Application Details

Application Notes:	Approved: WB (0.2 - 1 µg/mL)
Comment:	Target Species of Antibody: Human
Restrictions:	For Research Use only

Handling

Format:	Lyophilized
Reconstitution:	After adding water, will consist of PBS buffer with 2 % sucrose
Concentration:	Lot specific
Buffer:	Lyophilized from PBS with 2 % sucrose
Handling Advice:	Avoid repeat freeze-thaw cycles.
Storage:	4 °C,-20 °C
Storage Comment:	Long term: -20°C, the use of 50% glycerol is recommended if storing aliquots in -20°C for long term use (up to 1 year) Short term (less than 1 week): 4°C. Avoid freeze-thaw cycles.

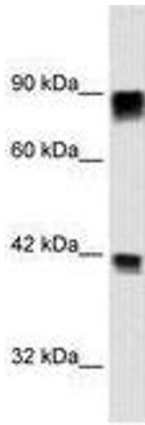


Image 1.