

Datasheet for ABIN6735965
anti-Cyclin D3 antibody (C-Term)



[Go to Product page](#)

2 Images

Overview

Quantity:	100 µL
Target:	Cyclin D3 (CCND3)
Binding Specificity:	C-Term
Reactivity:	Human, Mouse, Rat, Monkey, Cow, Dog, Pig, Sheep, Bat, Horse
Host:	Rabbit
Clonality:	Polyclonal
Conjugate:	This Cyclin D3 antibody is un-conjugated
Application:	Western Blotting (WB), Immunohistochemistry (IHC), Immunohistochemistry (Paraffin-embedded Sections) (IHC (p))

Product Details

Immunogen:	Synthetic peptide from C-Terminus of human CCND3 (P30281, NP_001751). Percent identity by BLAST analysis: Human, Gorilla, Gibbon, Baboon, Monkey, Galago, Marmoset, Mouse, Rat, Shrew, Sheep, Panda, Dog, Bovine, Bat, Horse, Pig (100%), Guinea pig (92%), Elephant, Opossum (85%), Turkey, Chicken (80%). Type of Immunogen: Synthetic peptide
Isotype:	IgG
Specificity:	Human CCND3 / Cyclin D3
Predicted Reactivity:	Percent identity by BLAST analysis: Human, Mouse, Rat, Sheep, Dog, Bovine, Pig (100%) Guinea pig (92%) Chicken (80%).

Product Details

Purification: Immunoaffinity purified

Target Details

Target: Cyclin D3 (CCND3)

Alternative Name: CCND3 / Cyclin D3 ([CCND3 Products](#))

Background: Name/Gene ID: CCND3

Synonyms: CCND3, D3-type cyclin, G1/S-specific cyclin D3, G1/S-specific cyclin-D3, Cyclin D3

Gene ID: 896

NCBI Accession: [NP_001751](#)

UniProt: [P30281](#)

Pathways: [Cell Division Cycle](#), [Mitotic G1-G1/S Phases](#), [Glycosaminoglycan Metabolic Process](#)

Application Details

Application Notes: Approved: IHC, IHC-P, WB (0.2 - 1 µg/mL)

Comment: Target Species of Antibody: Human

Restrictions: For Research Use only

Handling

Format: Lyophilized

Reconstitution: After adding water, will consist of PBS buffer with 2 % sucrose

Concentration: Lot specific

Buffer: Lyophilized.

Handling Advice: Avoid repeat freeze-thaw cycles.

Storage: 4 °C, -20 °C

Storage Comment: Long term: -20°C, the use of 50% glycerol is recommended if storing aliquots in -20°C for long term use (up to 1 year)

Short term (less than 1 week): 4°C. Avoid freeze-thaw cycles.



Image 1.

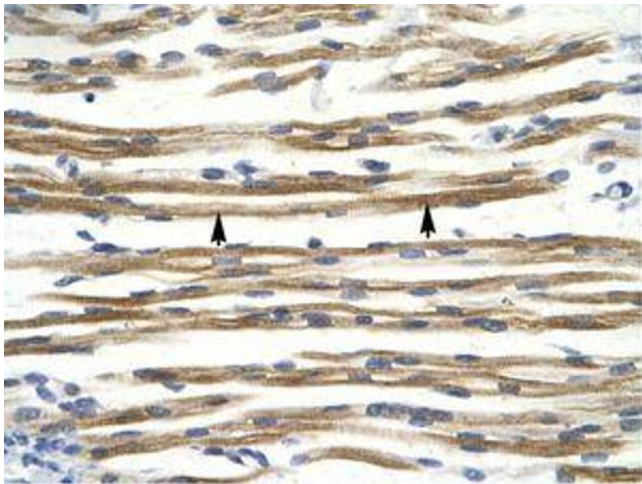


Image 2.