



[Go to Product page](#)

Datasheet for ABIN6735980
anti-HSFX1 antibody (AA 224-273)

2 Images

Overview

Quantity:	100 µL
Target:	HSFX1
Binding Specificity:	AA 224-273
Reactivity:	Human
Host:	Rabbit
Clonality:	Polyclonal
Conjugate:	This HSFX1 antibody is un-conjugated
Application:	Western Blotting (WB), Immunohistochemistry (IHC), Immunohistochemistry (Paraffin-embedded Sections) (IHC (p))

Product Details

Immunogen:	Synthetic peptide located between aa224-273 of human HSFX1 (Q9UBD0, NP_057237). Percent identity by BLAST analysis: Human, Chimpanzee (100%), Gorilla (92%). Type of Immunogen: Synthetic peptide
Isotype:	IgG
Specificity:	Human HSFX1 / LW-1
Predicted Reactivity:	Percent identity by BLAST analysis: Human (100%).
Purification:	Immunoaffinity purified

Target Details

Target:	HSFX1
Alternative Name:	LW-1 / HSFX1 (HSFX1 Products)
Background:	Name/Gene ID: HSFX1 Synonyms: HSFX1, LW-1
Gene ID:	100506164
NCBI Accession:	NP_057237
UniProt:	Q9UBD0

Application Details

Application Notes:	Approved: IHC, IHC-P, WB (0.2 - 1 µg/mL)
Comment:	Target Species of Antibody: Human
Restrictions:	For Research Use only

Handling

Format:	Lyophilized
Reconstitution:	After adding water, will consist of PBS buffer with 2 % sucrose
Concentration:	Lot specific
Buffer:	Lyophilized from PBS with 2 % sucrose
Handling Advice:	Avoid repeat freeze-thaw cycles.
Storage:	4 °C, -20 °C
Storage Comment:	Long term: -20°C, the use of 50% glycerol is recommended if storing aliquots in -20°C for long term use (up to 1 year) Short term (less than 1 week): 4°C. Avoid freeze-thaw cycles.

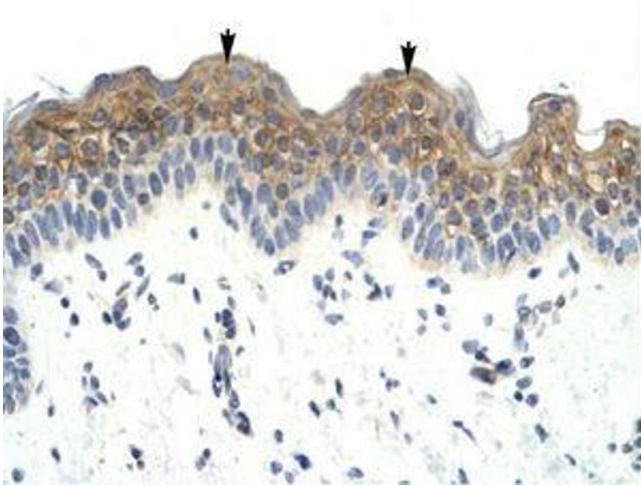


Image 1.

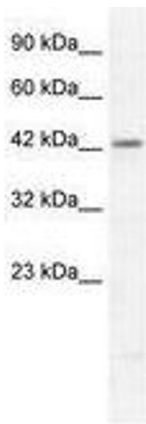


Image 2.