



[Go to Product page](#)

Datasheet for ABIN6735981
anti-T-Box 6 antibody (AA 62-111)

2 Images

Overview

Quantity:	100 µL
Target:	T-Box 6 (TBX6)
Binding Specificity:	AA 62-111
Reactivity:	Human, Mouse, Rat, Horse, Monkey, Bat
Host:	Rabbit
Clonality:	Polyclonal
Application:	Western Blotting (WB), Immunohistochemistry (IHC), Immunohistochemistry (Paraffin-embedded Sections) (IHC (p))

Product Details

Immunogen:	Synthetic peptide located between aa62-111 of human TBX6 (O95947, NP_004599). Percent identity by BLAST analysis: Human, Chimpanzee, Gorilla, Gibbon, Monkey, Galago, Marmoset, Mouse, Rat, Elephant, Panda, Bat, Horse (100%), Hamster, Dog, Bovine, Guinea pig (92%). Type of Immunogen: Synthetic peptide
Isotype:	IgG
Specificity:	Human TBX6
Predicted Reactivity:	Percent identity by BLAST analysis: Human, Mouse, Rat, Horse (100%) Dog, Bovine (92%).
Purification:	Immunoaffinity purified

Target Details

Target:	T-Box 6 (TBX6)
Alternative Name:	TBX6 (TBX6 Products)
Background:	Name/Gene ID: TBX6 Synonyms: TBX6, T-box protein 6, T-box 6, DFNB67
Gene ID:	6911
NCBI Accession:	NP_004599
UniProt:	O95947

Application Details

Application Notes:	Approved: IHC, IHC-P, WB (0.2 - 1 µg/mL)
Comment:	Target Species of Antibody: Human
Restrictions:	For Research Use only

Handling

Format:	Lyophilized
Reconstitution:	After adding water, will consist of PBS buffer with 2 % sucrose
Concentration:	Lot specific
Buffer:	Lyophilized from PBS with 2 % sucrose
Handling Advice:	Avoid repeat freeze-thaw cycles.
Storage:	4 °C, -20 °C
Storage Comment:	Long term: -20°C, the use of 50% glycerol is recommended if storing aliquots in -20°C for long term use (up to 1 year) Short term (less than 1 week): 4°C. Avoid freeze-thaw cycles.



Image 1.

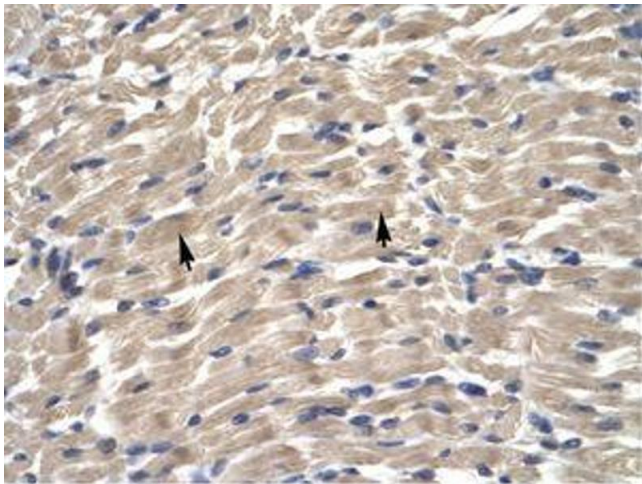


Image 2.